

A6209

Leader in Biomolecular Solutions for Life Science



Integrin alpha 5 (ITGA5/CD49e) Rabbit pAb

Catalog No.: A6209

1 Publications

Basic Information

Observed MW

135kDa

Calculated MW

115kDa

Category

Polyclonal Antibody

Applications

WB, IF/ICC, ELISA

Cross-Reactivity

Human, Mouse, Rat

Background

The product of this gene belongs to the integrin alpha chain family. Integrins are heterodimeric integral membrane proteins composed of an alpha subunit and a beta subunit that function in cell surface adhesion and signaling. The encoded preproprotein is proteolytically processed to generate light and heavy chains that comprise the alpha 5 subunit. This subunit associates with the beta 1 subunit to form a fibronectin receptor. This integrin may promote tumor invasion, and higher expression of this gene may be correlated with shorter survival time in lung cancer patients. Note that the integrin alpha 5 and integrin alpha V subunits are encoded by distinct genes.

Recommended Dilutions

WB 1:500 - 1:2000

IF/ICC 1:50 - 1:200

Immunogen Information

Gene ID

3678

Swiss Prot

P08648

Immunogen

Recombinant fusion protein containing a sequence corresponding to amino acids 750-1000 of human Integrin alpha 5 (ITGA5/CD49e) (NP_002196.4).

Synonyms

FNRA; CD49e; VLA-5; VLA5A; Integrin alpha 5 (ITGA5/CD49e)

Contact



www.abclonal.com

Product Information

Source

Rabbit

Isotype

IgG

Purification

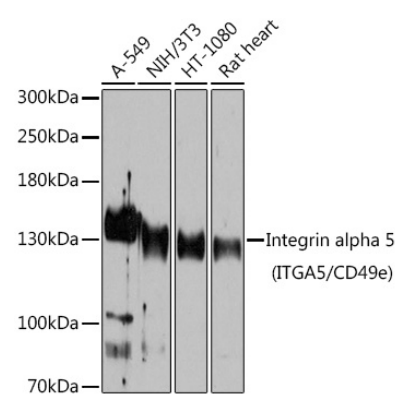
Affinity purification

Storage

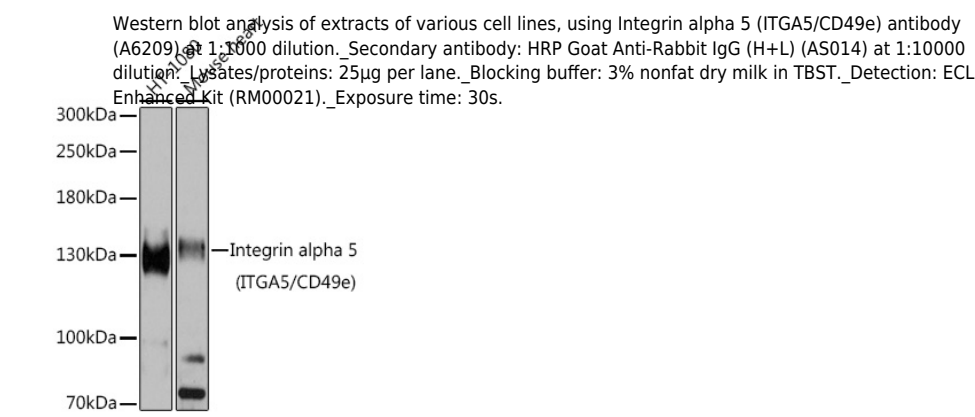
Store at -20°C. Avoid freeze / thaw cycles.

Buffer: PBS with 0.02% sodium azide, 50% glycerol, pH 7.3.

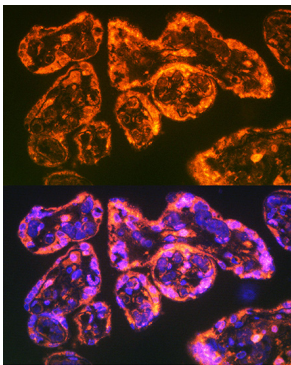
Validation Data



Western blot analysis of extracts of various cell lines, using Integrin alpha 5 (ITGA5/CD49e) antibody (A6209) at 1:1000 dilution. Secondary antibody: HRP Goat Anti-Rabbit IgG (H+L) (AS014) at 1:10000 dilution. Lysates/proteins: 25µg per lane. Blocking buffer: 3% nonfat dry milk in TBST. Detection: ECL Basic Kit (RM00020). Exposure time: 90s.



Western blot analysis of extracts of various cell lines, using Integrin alpha 5 (ITGA5/CD49e) antibody (A6209) at 1:1000 dilution. Secondary antibody: HRP Goat Anti-Rabbit IgG (H+L) (AS014) at 1:10000 dilution. Lysates/proteins: 25µg per lane. Blocking buffer: 3% nonfat dry milk in TBST. Detection: ECL Enhanced Kit (RM00021). Exposure time: 30s.



Immunofluorescence analysis of Human placenta using Integrin alpha 5 (ITGA5/CD49e) antibody (A6209) at dilution of 1:100. Blue: DAPI for nuclear staining.