

A6085

Leader in Biomolecular Solutions for Life Science



## eIF4E Rabbit pAb

Catalog No.: A6085

### Basic Information

**Observed MW**

25kDa

**Calculated MW**

25kDa

**Category**

Polyclonal Antibody

**Applications**

WB,IF/ICC,ELISA

**Cross-Reactivity**

Human,Mouse,Rat

### Background

The protein encoded by this gene is a component of the eukaryotic translation initiation factor 4F complex, which recognizes the 7-methylguanosine cap structure at the 5' end of messenger RNAs. The encoded protein aids in translation initiation by recruiting ribosomes to the 5'-cap structure. Association of this protein with the 4F complex is the rate-limiting step in translation initiation. This gene acts as a proto-oncogene, and its expression and activation is associated with transformation and tumorigenesis. Several pseudogenes of this gene are found on other chromosomes. Alternative splicing results in multiple transcript variants.

### Recommended Dilutions

<b>WB</b>	1:500 - 1:2000
<b>IF/ICC</b>	1:50 - 1:200

### Immunogen Information

**Gene ID**

1977

**Swiss Prot**

P06730

**Immunogen**

A synthetic peptide corresponding to a sequence within amino acids 1-100 of human eIF4E (NP\_001959.1).

**Synonyms**

CBP; EIF4F; AUTS19; EIF4E1; eIF-4E; EIF4EL1; eIF4E

### Contact



[www.abclonal.com](http://www.abclonal.com)

### Product Information

**Source**

Rabbit

**Isotype**

IgG

**Purification**

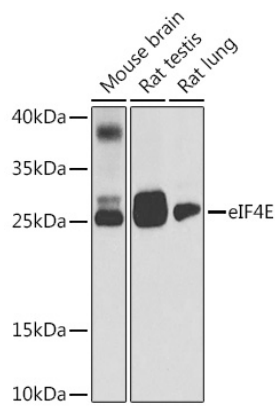
Affinity purification

**Storage**

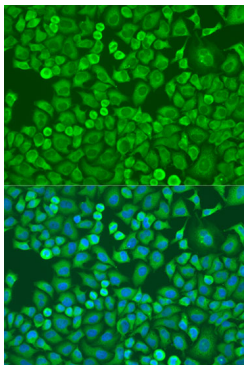
Store at -20°C. Avoid freeze / thaw cycles.

Buffer: PBS with 0.02% sodium azide,50% glycerol,pH7.3.

## Validation Data



Western blot analysis of extracts of various cell lines, using eIF4E antibody (A6085) at 1:1000 dilution.  
Secondary antibody: HRP Goat Anti-Rabbit IgG (H+L) (A5014) at 1:10000 dilution.  
Lysates/proteins: 25µg per lane.  
Blocking buffer: 3% nonfat dry milk in TBST.  
Detection: ECL Enhanced Kit (RM00021).  
Exposure time: 10s.



Immunofluorescence analysis of U2OS cells using eIF4E antibody (A6085) at dilution of 1:100. Blue: DAPI for nuclear staining.