

A6044

Leader in Biomolecular Solutions for Life Science



## PIWIL2 Rabbit pAb

Catalog No.: A6044

2 Publications

### Basic Information

#### Observed MW

110kDa

#### Calculated MW

105kDa/109kDa

#### Category

Polyclonal Antibody

#### Applications

WB, ELISA

#### Cross-Reactivity

Mouse, Rat

### Background

Enables RNA binding activity; endoribonuclease activity; and polysome binding activity. Involved in several processes, including germ-line stem cell population maintenance; nucleic acid metabolic process; and positive regulation of cellular protein metabolic process. Acts upstream of or within oogenesis and positive regulation of meiosis I. Located in several cellular components, including cytoplasmic ribonucleoprotein granule; dense body; and perinucleolar chromocenter. Part of PET complex. Is expressed in central nervous system; genitourinary system; and sensory organ. Orthologous to human PIWIL2 (piwi like RNA-mediated gene silencing 2).

### Recommended Dilutions

WB 1:1000 - 1:3000

### Immunogen Information

#### Gene ID

57746

#### Swiss Prot

#### Immunogen

Recombinant fusion protein containing a sequence corresponding to amino acids 398-652 of mouse PIWIL2 (Q8CDG1).

#### Synonyms

mili; Piwil1; PIWIL2

### Contact



[www.abclonal.com](http://www.abclonal.com)

### Product Information

#### Source

Rabbit

#### Isotype

IgG

#### Purification

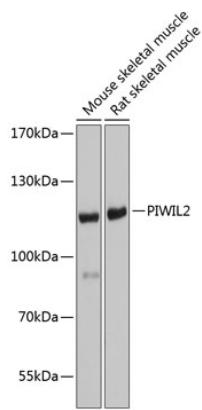
Affinity purification

#### Storage

Store at -20°C. Avoid freeze / thaw cycles.

Buffer: PBS with 0.02% sodium azide, 50% glycerol, pH 7.3.

# Validation Data



Western blot analysis of extracts of various cell lines, using PIWIL2 antibody (A6044) at 1:1000 dilution.  
Secondary antibody: HRP Goat Anti-Rabbit IgG (H+L) (AS014) at 1:10000 dilution.  
Lysates/proteins: 25µg per lane.  
Blocking buffer: 3% nonfat dry milk in TBST.  
Detection: ECL Basic Kit (RM00020).  
Exposure time: 5s.