

A6042

Leader in Biomolecular Solutions for Life Science



PAIP1 Rabbit pAb

Catalog No.: A6042

1 Publications

Basic Information

Observed MW

70kDa

Calculated MW

54kDa

Category

Polyclonal Antibody

Applications

WB, ELISA

Cross-Reactivity

Human, Mouse, Rat

Background

The protein encoded by this gene interacts with poly(A)-binding protein and with the cap-binding complex eIF4A. It is involved in translational initiation and protein biosynthesis. Overexpression of this gene in COS7 cells stimulates translation. Alternative splicing occurs at this locus and three transcript variants encoding three distinct isoforms have been identified.

Recommended Dilutions

WB 1:500 - 1:1000

Immunogen Information

Gene ID

10605

Swiss Prot

Q9H074

Immunogen

Recombinant fusion protein containing a sequence corresponding to amino acids 1-260 of human PAIP1 (NP_877590.1).

Synonyms

PAIP1

Contact



www.abclonal.com

Product Information

Source

Rabbit

Isotype

IgG

Purification

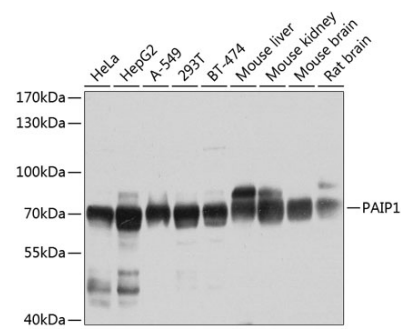
Affinity purification

Storage

Store at -20°C. Avoid freeze / thaw cycles.

Buffer: PBS with 0.02% sodium azide, 50% glycerol, pH 7.3.

Validation Data



Western blot analysis of extracts of various cell lines, using PAIP1 antibody (A6042) at 1:1000 dilution.
Secondary antibody: HRP Goat Anti-Rabbit IgG (H+L) (AS014) at 1:10000 dilution.
Lysates/proteins: 25µg per lane.
Blocking buffer: 3% nonfat dry milk in TBST.
Detection: ECL Basic Kit (RM00020).
Exposure time: 30s.