

A5961

Leader in Biomolecular Solutions for Life Science



## POP1 Rabbit pAb

Catalog No.: A5961

### Basic Information

**Observed MW**

115kDa

**Calculated MW**

115kDa

**Category**

Polyclonal Antibody

**Applications**

WB, ELISA

**Cross-Reactivity**

Mouse, Rat

### Background

This gene encodes the protein subunit of two different small nucleolar ribonucleoprotein complexes: the endoribonuclease for mitochondrial RNA processing complex and the ribonuclease P complex. The encoded protein is a ribonuclease that localizes to the nucleus and functions in pre-RNA processing. This protein is also an autoantigen in patients suffering from connective tissue diseases. Alternative splicing results in multiple transcript variants.

### Recommended Dilutions

WB 1:200 - 1:2000

### Immunogen Information

**Gene ID**

10940

**Swiss Prot**

Q99575

**Immunogen**

Recombinant fusion protein containing a sequence corresponding to amino acids 1-210 of human POP1 (NP\_055844.2).

**Synonyms**

ANXD2; POP1

### Contact



[www.abclonal.com](http://www.abclonal.com)

### Product Information

**Source**

Rabbit

**Isotype**

IgG

**Purification**

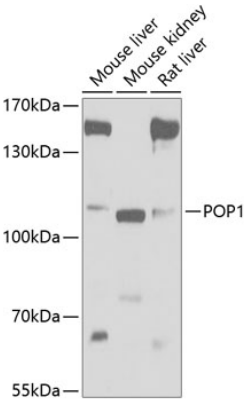
Affinity purification

**Storage**

Store at -20°C. Avoid freeze / thaw cycles.

Buffer: PBS with 0.02% sodium azide, 50% glycerol, pH 7.3.

# Validation Data



Western blot analysis of extracts of various cell lines, using POP1 antibody (A5961) at 1:1000 dilution.  
Secondary antibody: HRP Goat Anti-Rabbit IgG (H+L) (A5014) at 1:10000 dilution.  
Lysates/proteins: 25µg per lane.  
Blocking buffer: 3% nonfat dry milk in TBST.  
Detection: ECL Basic Kit (RM00020).  
Exposure time: 5s.