

A5854

Leader in Biomolecular Solutions for Life Science



SRPK1 Rabbit pAb

Catalog No.: A5854

1 Publications

Basic Information

Observed MW

95kDa

Calculated MW

74kDa

Category

Polyclonal Antibody

Applications

WB, ELISA

Cross-Reactivity

Human, Mouse, Rat

Background

This gene encodes a serine/arginine protein kinase specific for the SR (serine/arginine-rich domain) family of splicing factors. The protein localizes to the nucleus and the cytoplasm. It is thought to play a role in regulation of both constitutive and alternative splicing by regulating intracellular localization of splicing factors. Alternative splicing of this gene results in multiple transcript variants. Additional alternatively spliced transcript variants have been described for this gene, but their full length nature have not been determined.

Recommended Dilutions

WB 1:500 - 1:1000

Immunogen Information

Gene ID

6732

Swiss Prot

Q96SB4

Immunogen

A synthetic peptide corresponding to a sequence within amino acids 290-480 of human SRPK1 (NP_003128.3).

Synonyms

SFRSK1; SRPK1

Contact



www.abclonal.com

Product Information

Source

Rabbit

Isotype

IgG

Purification

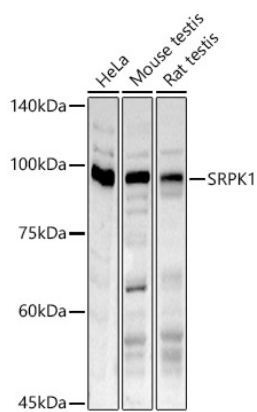
Affinity purification

Storage

Store at -20°C. Avoid freeze / thaw cycles.

Buffer: PBS with 0.05% proclin300, 50% glycerol, pH7.3.

Validation Data



Western blot analysis of extracts of various cell lines, using SRPK1 antibody (A5854) at 1:1000 dilution.
Secondary antibody: HRP Goat Anti-Rabbit IgG (H+L) (A5014) at 1:10000 dilution.
Lysates/proteins: 25µg per lane.
Blocking buffer: 3% nonfat dry milk in TBST.
Detection: ECL Basic Kit (RM00020).
Exposure time: 90s.