

A5812

Leader in Biomolecular Solutions for Life Science



COMP Rabbit pAb

Catalog No.: A5812

Basic Information

Observed MW

110kDa

Calculated MW

83kDa

Category

Polyclonal Antibody

Applications

WB,IF/ICC,ELISA

Cross-Reactivity

Human,Mouse,Rat

Background

The protein encoded by this gene is a noncollagenous extracellular matrix (ECM) protein. It consists of five identical glycoprotein subunits, each with EGF-like and calcium-binding (thrombospondin-like) domains. Oligomerization results from formation of a five-stranded coiled coil and disulfides. Binding to other ECM proteins such as collagen appears to depend on divalent cations. Contraction or expansion of a 5 aa aspartate repeat and other mutations can cause pseudochoondroplasia (PSACH) and multiple epiphyseal dysplasia (MED).

Recommended Dilutions

| | |
|--------|----------------|
| WB | 1:500 - 1:1000 |
| IF/ICC | 1:50 - 1:200 |

Immunogen Information

Gene ID

1311

Swiss Prot

P49747

Immunogen

Recombinant fusion protein containing a sequence corresponding to amino acids 20-160 of human COMP (NP_000086.2).

Synonyms

MED; CTS2; EDM1; EPD1; TSP5; PSACH; THBS5; TSP-5; COMP

Contact



www.abclonal.com

Product Information

Source

Rabbit

Isotype

IgG

Purification

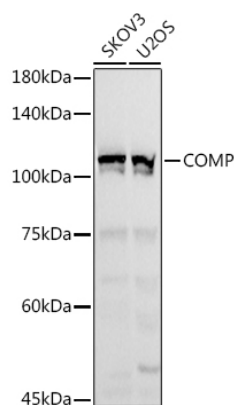
Affinity purification

Storage

Store at -20°C. Avoid freeze / thaw cycles.

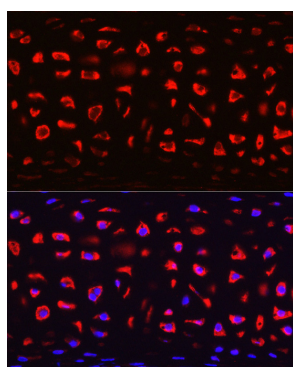
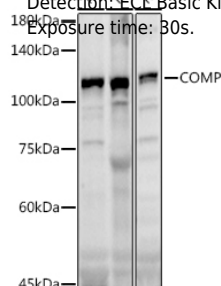
Buffer: PBS with 0.05% proclin300,50% glycerol,pH7.3.

Validation Data

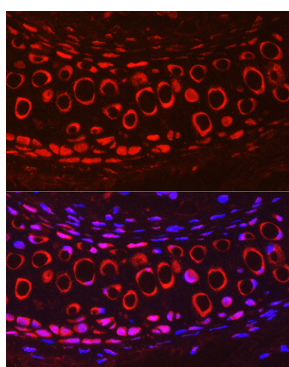


Western blot analysis of extracts of various cell lines, using COMP antibody (A5812) at 1:1000 dilution.
 Secondary antibody: HRP Goat Anti-Rabbit IgG (H+L) (A5014) at 1:10000 dilution.
 Lysates/proteins: 25µg per lane.
 Blocking buffer: 3% nonfat dry milk in TBST.
 Detection: ECL Basic Kit (RM00020).
 Exposure time: 1s.

Western blot analysis of extracts of various cell lines, using COMP antibody (A5812) at 1:1000 dilution.
 Secondary antibody: HRP Goat Anti-Rabbit IgG (H+L) (A5014) at 1:10000 dilution.
 Lysates/proteins: 25µg per lane.
 Blocking buffer: 3% nonfat dry milk in TBST.
 Detection: ECL Basic Kit (RM00020).
 Exposure time: 30s.



Immunofluorescence analysis of Rat cartilage using COMP Rabbit pAb (A5812) at dilution of 1:200 (40x lens). Blue: DAPI for nuclear staining.



Immunofluorescence analysis of Mouse cartilage using COMP Rabbit pAb (A5812) at dilution of 1:200 (40x lens). Blue: DAPI for nuclear staining.