

A5786

Leader in Biomolecular Solutions for Life Science



## Collagen I/COL1A2 Rabbit pAb

Catalog No.: A5786

26 Publications

### Basic Information

#### Observed MW

165kDa

#### Calculated MW

129kDa

#### Category

Polyclonal Antibody

#### Applications

WB, IHC-P, IF/ICC, ELISA

#### Cross-Reactivity

Human, Mouse, Rat

### Background

This gene encodes the pro-alpha2 chain of type I collagen whose triple helix comprises two alpha1 chains and one alpha2 chain. Type I is a fibril-forming collagen found in most connective tissues and is abundant in bone, cornea, dermis and tendon. Mutations in this gene are associated with osteogenesis imperfecta types I-IV, Ehlers-Danlos syndrome type VIIB, recessive Ehlers-Danlos syndrome Classical type, idiopathic osteoporosis, and atypical Marfan syndrome. Symptoms associated with mutations in this gene, however, tend to be less severe than mutations in the gene for the alpha1 chain of type I collagen (COL1A1) reflecting the different role of alpha2 chains in matrix integrity. Three transcripts, resulting from the use of alternate polyadenylation signals, have been identified for this gene.

### Recommended Dilutions

WB	1:500 - 1:1000
IHC-P	1:50 - 1:200
IF/ICC	1:25 - 1:200

### Immunogen Information

#### Gene ID

1278

#### Swiss Prot

P08123

#### Immunogen

A synthetic peptide corresponding to a sequence within amino acids 501-600 of human Collagen I/COL1A2 (NP\_000080.2).

#### Synonyms

OI4; EDSCV; EDSARTH2; Collagen I/COL1A2

### Contact



[www.abclonal.com](http://www.abclonal.com)

### Product Information

#### Source

Rabbit

#### Isotype

IgG

#### Purification

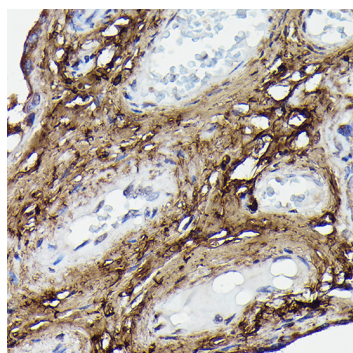
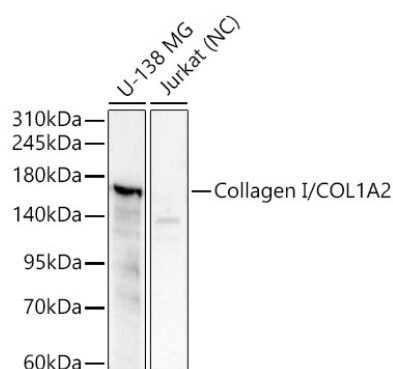
Affinity purification

#### Storage

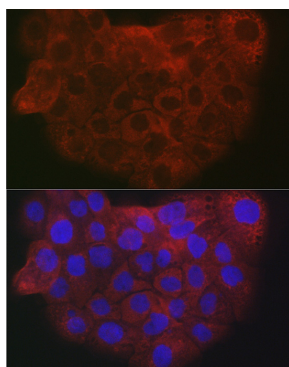
Store at -20°C. Avoid freeze / thaw cycles.

Buffer: PBS with 0.05% proclin300, 50% glycerol, pH7.3.

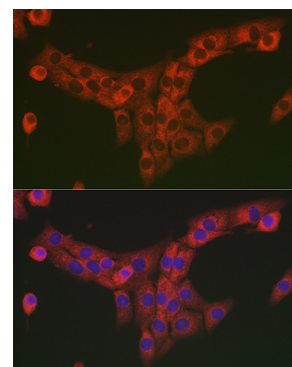
## Validation Data



Immunohistochemistry analysis of Collagen I/COL1A2 in paraffin-embedded human placenta using Collagen I/COL1A2 Rabbit pAb (A5786) at dilution of 1:100 (40x lens). Perform high pressure antigen retrieval with 10 mM citrate buffer pH 6.0 before commencing with IHC staining protocol.



Immunofluorescence analysis of A-431 cells using Collagen I/COL1A2 Rabbit pAb (A5786) at dilution of 1:25. Secondary antibody: Cy3 Goat Anti-Rabbit IgG (H+L) (AS007) at 1:500 dilution. Blue: DAPI for nuclear staining.



Immunofluorescence analysis of NIH/3T3 cells using Collagen I/COL1A2 Rabbit pAb (A5786) at dilution of 1:25. Secondary antibody: Cy3 Goat Anti-Rabbit IgG (H+L) (AS007) at 1:500 dilution. Blue: DAPI for nuclear staining.