

# TOPBP1 Rabbit pAb

Catalog No.: A5781 **2 Publications**

## Basic Information

### Observed MW

200kDa

### Calculated MW

171kDa

### Category

Primary antibody

### Applications

ELISA, WB, IHC-P

### Cross-Reactivity

Human, Mouse, Rat

## Background

This gene encodes a binding protein which interacts with the C-terminal region of topoisomerase II beta. This interaction suggests a supportive role for this protein in the catalytic reactions of topoisomerase II beta through transient breakages of DNA strands.

## Recommended Dilutions

|              |               |
|--------------|---------------|
| <b>WB</b>    | 1:100 - 1:500 |
| <b>IHC-P</b> | 1:50 - 1:200  |

## Immunogen Information

### Gene ID

11073

### Swiss Prot

Q92547

### Immunogen

Recombinant fusion protein containing a sequence corresponding to amino acids 1253-1522 of human TOPBP1 (NP\_008958.2).

### Synonyms

Dpb11; TOP2BP1; TOPBP1

## Contact

 | [www.abclonal.com](http://www.abclonal.com)

## Product Information

### Source

Rabbit

### Isotype

IgG

### Purification

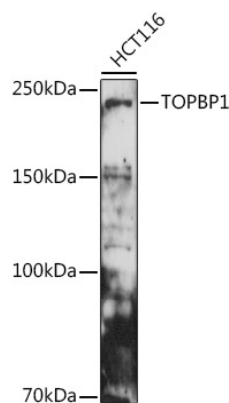
Affinity purification

### Storage

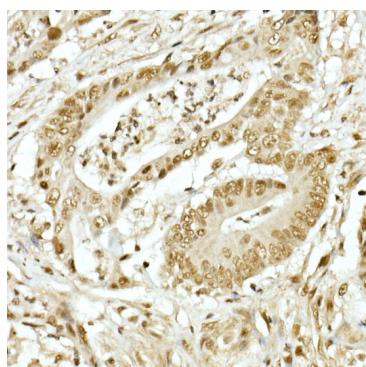
Store at -20°C. Avoid freeze / thaw cycles.

Buffer: PBS with 0.05% proclin300, 50% glycerol, pH7.3.

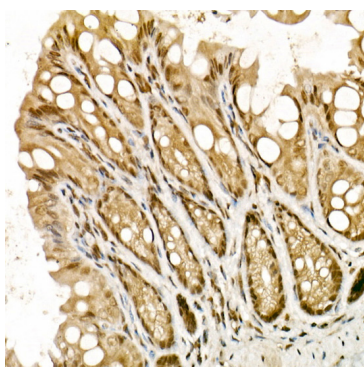
## Validation Data



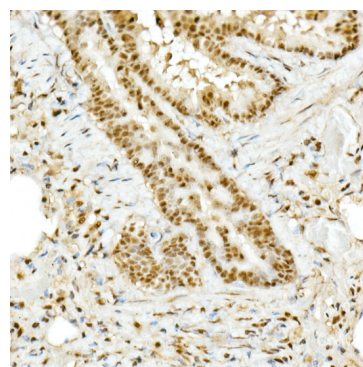
Western blot analysis of extracts of HCT116 cells, using TOPBP1 antibody (A5781) at 1:500 dilution.  
Secondary antibody: HRP Goat Anti-Rabbit IgG (H+L) (A5014) at 1:10000 dilution.  
Lysates/proteins: 25µg per lane.  
Blocking buffer: 3% nonfat dry milk in TBST.  
Detection: ECL Basic Kit (RM00020).  
Exposure time: 90s.



Immunohistochemistry analysis of paraffin-embedded human colon carcinoma using TOPBP1 Rabbit pAb (A5781) at dilution of 1:50 (40x lens). Perform high pressure antigen retrieval with 10 mM citrate buffer pH 6.0 before commencing with IHC staining protocol.



Immunohistochemistry analysis of paraffin-embedded mouse intestine using TOPBP1 Rabbit pAb (A5781) at dilution of 1:50 (40x lens). Perform high pressure antigen retrieval with 10 mM citrate buffer pH 6.0 before commencing with IHC staining protocol.



Immunohistochemistry analysis of paraffin-embedded rat lung using TOPBP1 Rabbit pAb (A5781) at dilution of 1:50 (40x lens). Perform high pressure antigen retrieval with 10 mM citrate buffer pH 6.0 before commencing with IHC staining protocol.