

A5697

Leader in Biomolecular Solutions for Life Science



## PSMB4 Rabbit pAb

Catalog No.: A5697

1 Publications

### Basic Information

#### Observed MW

22kDa

#### Calculated MW

29kDa

#### Category

Mouse Monoclonal Antibody

#### Applications

WB, ELISA

#### Cross-Reactivity

Human, Mouse, Rat

### Background

The proteasome is a multicatalytic proteinase complex with a highly ordered ring-shaped 20S core structure. The core structure is composed of 4 rings of 28 non-identical subunits; 2 rings are composed of 7 alpha subunits and 2 rings are composed of 7 beta subunits. Proteasomes are distributed throughout eukaryotic cells at a high concentration and cleave peptides in an ATP/ubiquitin-dependent process in a non-lysosomal pathway. An essential function of a modified proteasome, the immunoproteasome, is the processing of class I MHC peptides. This gene encodes a member of the proteasome B-type family, also known as the T1B family, that is a 20S core beta subunit.

### Recommended Dilutions

WB 1:500 - 1:2000

### Immunogen Information

#### Gene ID

5692

#### Swiss Prot

P28070

#### Immunogen

Recombinant fusion protein containing a sequence corresponding to amino acids 1-264 of human PSMB4 (NP\_002787.2).

#### Synonyms

HN3; HsN3; PRAAS3; PROS26; PROS-26; PSMB4

### Contact



[www.abclonal.com](http://www.abclonal.com)

### Product Information

#### Source

Rabbit

#### Isotype

IgG

#### Purification

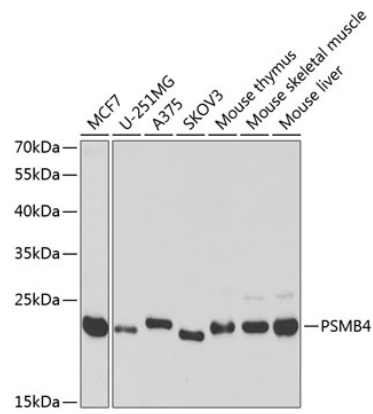
Affinity purification

#### Storage

Store at -20°C. Avoid freeze / thaw cycles.

Buffer: PBS with 0.02% sodium azide, 50% glycerol, pH 7.3.

Validation Data



Western blot analysis of extracts of various cell lines, using PSMB4 antibody (A5697) at 1:1000 dilution.  
Secondary antibody: HRP Goat Anti-Rabbit IgG (H+L) (A5014) at 1:10000 dilution.  
Lysates/proteins: 25µg per lane.  
Blocking buffer: 3% nonfat dry milk in TBST.  
Detection: ECL Basic Kit (RM00020).  
Exposure time: 90s.