

A5689

Leader in Biomolecular Solutions for Life Science



GRB2 Rabbit pAb

Catalog No.: A5689

Basic Information

Observed MW

33kDa

Calculated MW

25kDa

Category

Polyclonal Antibody

Applications

WB,IF/ICC,ELISA

Cross-Reactivity

Human,Mouse

Background

The protein encoded by this gene binds the epidermal growth factor receptor and contains one SH2 domain and two SH3 domains. Its two SH3 domains direct complex formation with proline-rich regions of other proteins, and its SH2 domain binds tyrosine phosphorylated sequences. This gene is similar to the Sem5 gene of C.elegans, which is involved in the signal transduction pathway. Two alternatively spliced transcript variants encoding different isoforms have been found for this gene.

Recommended Dilutions

WB	1:500 - 1:2000
IF/ICC	1:10 - 1:100

Immunogen Information

Gene ID

2885

Swiss Prot

P62993

Immunogen

Recombinant fusion protein containing a sequence corresponding to amino acids 1-217 of human GRB2 (NP_002077.1).

Synonyms

ASH; Grb3-3; MST084; NCKAP2; MSTP084; EGFRBP-GRB2; GRB2

Contact



www.abclonal.com

Product Information

Source

Rabbit

Isotype

IgG

Purification

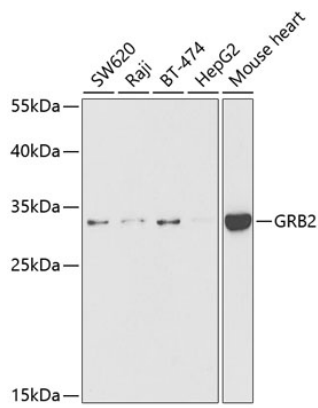
Affinity purification

Storage

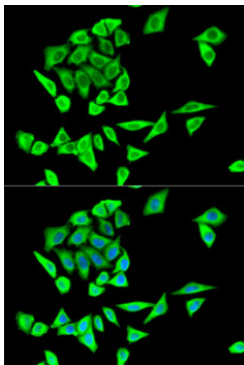
Store at -20°C. Avoid freeze / thaw cycles.

Buffer: PBS with 0.02% sodium azide,50% glycerol,pH7.3.

Validation Data



Western blot analysis of extracts of various cell lines, using GRB2 antibody (A5689) at 1:1000 dilution.
Secondary antibody: HRP Goat Anti-Rabbit IgG (H+L) (A5014) at 1:10000 dilution.
Lysates/proteins: 25µg per lane.
Blocking buffer: 3% nonfat dry milk in TBST.
Detection: ECL Basic Kit (RM00020).
Exposure time: 90s.



Immunofluorescence analysis of HeLa cells using GRB2 antibody (A5689). Blue: DAPI for nuclear staining.