

A5673

Leader in Biomolecular Solutions for Life Science



Leptin Rabbit pAb

Catalog No.: A5673

Basic Information

Observed MW

Calculated MW
19kDa

Category
Polyclonal Antibody

Applications
IHC-P,ELISA

Cross-Reactivity
Human

Background

This gene encodes a protein that is secreted by white adipocytes into the circulation and plays a major role in the regulation of energy homeostasis. Circulating leptin binds to the leptin receptor in the brain, which activates downstream signaling pathways that inhibit feeding and promote energy expenditure. This protein also has several endocrine functions, and is involved in the regulation of immune and inflammatory responses, hematopoiesis, angiogenesis, reproduction, bone formation and wound healing. Mutations in this gene and its regulatory regions cause severe obesity and morbid obesity with hypogonadism in human patients. A mutation in this gene has also been linked to type 2 diabetes mellitus development.

Recommended Dilutions

IHC-P 1:50 - 1:200

Immunogen Information

Gene ID 3952	Swiss Prot P41159
------------------------	-----------------------------

Immunogen

Recombinant fusion protein containing a sequence corresponding to amino acids 22-167 of human Leptin (NP_000221.1).

Synonyms

OB; OBS; LEPD; Leptin

Contact



www.abclonal.com

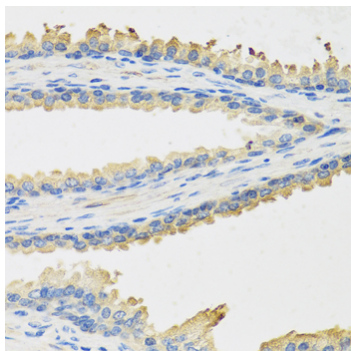
Product Information

Source Rabbit	Isotype IgG	Purification Affinity purification
-------------------------	-----------------------	--

Storage

Store at -20°C. Avoid freeze / thaw cycles.
Buffer: PBS with 0.02% sodium azide,50% glycerol,pH7.3.

Validation Data



Immunohistochemistry analysis of paraffin-embedded human prostate using Leptin antibody (A5673) at dilution of 1:100 (40x lens). Perform microwave antigen retrieval with 10 mM PBS buffer pH 7.2 before commencing with IHC staining protocol.