

A5665

Leader in Biomolecular Solutions for Life Science



Aquaporin-4 (AQP4) Rabbit pAb

Catalog No.: A5665

Basic Information

Observed MW

32kDa/36kDa

Calculated MW

35kDa

Category

Polyclonal Antibody

Applications

WB, ELISA

Cross-Reactivity

Human, Mouse

Background

This gene encodes a member of the aquaporin family of intrinsic membrane proteins that function as water-selective channels in the plasma membranes of many cells. This protein is the predominant aquaporin found in brain and has an important role in brain water homeostasis. Alternatively spliced transcript variants encoding different isoforms have been described for this gene. Additional isoforms, resulting from the use of alternative in-frame translation initiation codons, have also been described. Recent studies provided evidence for translational readthrough in this gene, and expression of C-terminally extended isoforms via the use of an alternative in-frame translation termination codon.

Recommended Dilutions

WB 1:500 - 1:1000

Immunogen Information

Gene ID

361

Swiss Prot

P55087

Immunogen

Recombinant fusion protein containing a sequence corresponding to amino acids 244-323 of Aquaporin-4 (AQP4) (NP_001641.1).

Synonyms

MIWC; WCH4; hAQP4; Aquaporin-4 (AQP4)

Contact



www.abclonal.com

Product Information

Source

Rabbit

Isotype

IgG

Purification

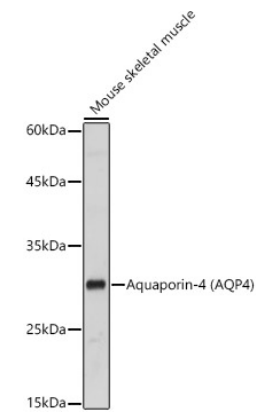
Affinity purification

Storage

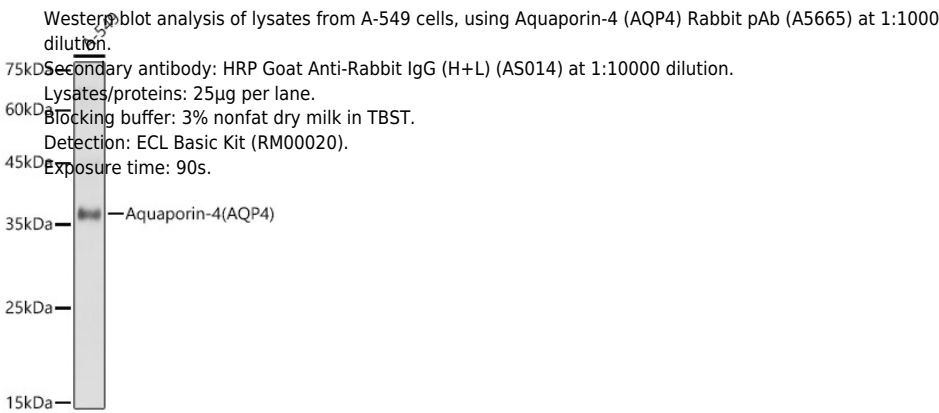
Store at -20°C. Avoid freeze / thaw cycles.

Buffer: PBS with 0.01% thimerosal, 50% glycerol, pH 7.3.

Validation Data



Western blot analysis of lysates from Mouse skeletal muscle, using Aquaporin-4 (AQP4) Rabbit pAb (A5665) at 1:1000 dilution.
Secondary antibody: HRP Goat Anti-Rabbit IgG (H+L) (AS014) at 1:10000 dilution.
Lysates/proteins: 25µg per lane.
Blocking buffer: 3% nonfat dry milk in TBST.
Detection: ECL Basic Kit (RM00020).
Exposure time: 90s.



Western blot analysis of lysates from A-549 cells, using Aquaporin-4 (AQP4) Rabbit pAb (A5665) at 1:1000 dilution.
Secondary antibody: HRP Goat Anti-Rabbit IgG (H+L) (AS014) at 1:10000 dilution.
Lysates/proteins: 25µg per lane.
Blocking buffer: 3% nonfat dry milk in TBST.
Detection: ECL Basic Kit (RM00020).
Exposure time: 90s.