

ROR2 Rabbit pAb

Catalog No.: A5620 **2 Publications**

Basic Information

Observed MW

140kDa

Calculated MW

105kDa

Category

Primary antibody

Applications

ELISA, WB, IHC-P

Cross-Reactivity

Human, Mouse, Rat

Background

The protein encoded by this gene is a receptor protein tyrosine kinase and type I transmembrane protein that belongs to the ROR subfamily of cell surface receptors. The protein may be involved in the early formation of the chondrocytes and may be required for cartilage and growth plate development. Mutations in this gene can cause brachydactyly type B, a skeletal disorder characterized by hypoplasia/aplasia of distal phalanges and nails. In addition, mutations in this gene can cause the autosomal recessive form of Robinow syndrome, which is characterized by skeletal dysplasia with generalized limb bone shortening, segmental defects of the spine, brachydactyly, and a dysmorphic facial appearance.

Recommended Dilutions

| | |
|--------------|----------------|
| WB | 1:500 - 1:1000 |
| IHC-P | 1:100 - 1:200 |

Immunogen Information

| | |
|----------------|-------------------|
| Gene ID | Swiss Prot |
| 4920 | Q01974 |

Immunogen

A synthetic peptide corresponding to a sequence within amino acids 100-200 of human ROR2 (NP_004551.2).

Synonyms

BDB; BDB1; NTRKR2; ROR2

Contact

 | www.abclonal.com

Product Information

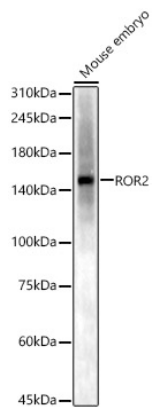
| | | |
|---------------|----------------|-----------------------|
| Source | Isotype | Purification |
| Rabbit | IgG | Affinity purification |

Storage

Store at -20°C. Avoid freeze / thaw cycles.

Buffer: PBS with 0.02% sodium azide, 50% glycerol, pH 7.3.

Validation Data



Western blot analysis of Mouse embryo, using ROR2 antibody (A5620) at 1:700 dilution.
Secondary antibody: HRP Goat Anti-Rabbit IgG (H+L) (A5014) at 1:10000 dilution.
Lysates/proteins: 25µg per lane.
Blocking buffer: 3% nonfat dry milk in TBST.
Detection: ECL Basic Kit (RM00020).
Exposure time: 180s.