

A5601

Leader in Biomolecular Solutions for Life Science



LC3B Rabbit pAb

Catalog No.: A5601

7 Publications

Basic Information

Observed MW

14kDa/16kDa

Calculated MW

15kDa

Category

Polyclonal Antibody

Applications

WB, IHC-P, ELISA

Cross-Reactivity

Human, Mouse, Rat

Background

The product of this gene is a subunit of neuronal microtubule-associated MAP1A and MAP1B proteins, which are involved in microtubule assembly and important for neurogenesis. Studies on the rat homolog implicate a role for this gene in autophagy, a process that involves the bulk degradation of cytoplasmic component.

Recommended Dilutions

WB 1:1000 - 1:5000

IHC-P 1:50 - 1:200

Immunogen Information

Gene ID

81631

Swiss Prot

Q9GZQ8

Immunogen

A synthetic peptide corresponding to a sequence within amino acids 1-100 of human LC3B (NP_073729.1).

Synonyms

LC3B; ATG8F; MAP1LC3B-a; MAP1A/1BLC3

Contact



www.abclonal.com

Product Information

Source

Rabbit

Isotype

IgG

Purification

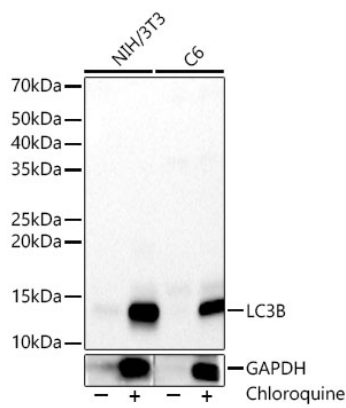
Affinity purification

Storage

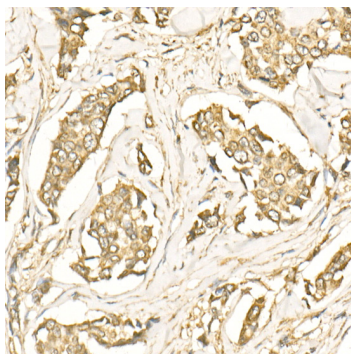
Store at -20°C. Avoid freeze / thaw cycles.

Buffer: PBS with 0.01% thimerosal, 50% glycerol, pH7.3.

Validation Data



Western blot analysis of extracts of various lysates, using LC3B antibody (A5601) at 1:2000 dilution. NIH/3T3 and C6 were treated by Chloroquine (50 μ M) at 37°C for 20 hours. Secondary antibody: HRP Goat Anti-Rabbit IgG (H+L) (A5014) at 1:10000 dilution. Lysates/proteins: 25 μ g per lane. Blocking buffer: 3% nonfat dry milk in TBST. Detection: ECL Basic Kit (RM00020). Exposure time: 20s.



Immunohistochemistry analysis of paraffin-embedded Human breast cancer using LC3B antibody (A5601) at dilution of 1:250 (20x lens). Perform high pressure antigen retrieval with 10 mM citrate buffer pH 6.0 before commencing with IHC staining protocol.