

A5600

Leader in Biomolecular Solutions for Life Science



ZEB1 Rabbit pAb

Catalog No.: A5600

15 Publications

Basic Information

Observed MW

200kDa

Calculated MW

124kDa

Category

Mouse Monoclonal Antibody

Applications

WB, IHC-P, IF/ICC, ELISA

Cross-Reactivity

Human, Mouse, Rat

Background

This gene encodes a zinc finger transcription factor. The encoded protein likely plays a role in transcriptional repression of interleukin 2. Mutations in this gene have been associated with posterior polymorphous corneal dystrophy-3 and late-onset Fuchs endothelial corneal dystrophy. Alternatively spliced transcript variants encoding different isoforms have been described.

Recommended Dilutions

WB	1:500 - 1:2000
IHC-P	1:50 - 1:200
IF/ICC	1:50 - 1:200

Immunogen Information

Gene ID
6935

Swiss Prot
P37275

Immunogen

A synthetic peptide corresponding to a sequence within amino acids 800-900 of human ZEB1 (NP_110378.3).

Synonyms

BZP; TCF8; AREB6; FECD6; NIL2A; PPCD3; ZFHEP; ZFHX1A; DELTAEF1; ZEB1

Contact



www.abclonal.com

Product Information

Source
Rabbit

Isotype
IgG

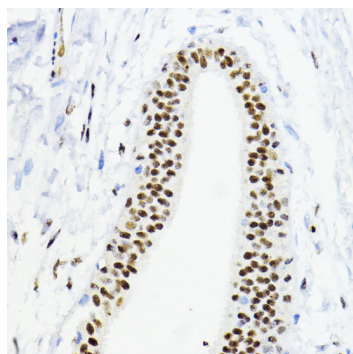
Purification
Affinity purification

Storage

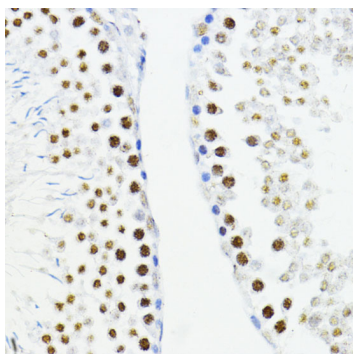
Store at -20°C. Avoid freeze / thaw cycles.

Buffer: PBS with 0.01% thimerosal, 50% glycerol, pH7.3.

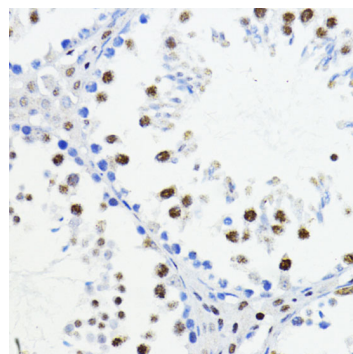
Validation Data



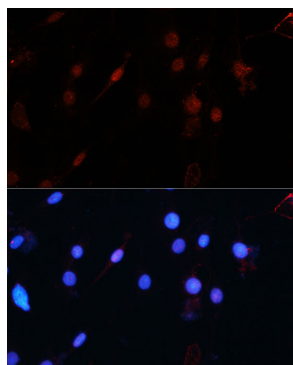
Immunohistochemistry analysis of ZEB1 in paraffin-embedded human mammary cancer using ZEB1 Rabbit pAb (A5600) at dilution of 1:200 (40x lens). Perform microwave antigen retrieval with 10 mM PBS buffer pH 7.2 before commencing with IHC staining protocol.



Immunohistochemistry analysis of ZEB1 in paraffin-embedded rat testis using ZEB1 Rabbit pAb (A5600) at dilution of 1:200 (40x lens). Perform microwave antigen retrieval with 10 mM PBS buffer pH 7.2 before commencing with IHC staining protocol.



Immunohistochemistry analysis of ZEB1 in paraffin-embedded mouse testis using ZEB1 Rabbit pAb (A5600) at dilution of 1:200 (40x lens). Perform microwave antigen retrieval with 10 mM PBS buffer pH 7.2 before commencing with IHC staining protocol.



Immunofluorescence analysis of C6 cells using ZEB1 Rabbit pAb (A5600) at dilution of 1:100 (40x lens). Secondary antibody: Cy3 Goat Anti-Rabbit IgG (H+L) (AS007) at 1:500 dilution. Blue: DAPI for nuclear staining.