

## ICAM1 Rabbit pAb

<b>Catalog No.</b>	A5597	<b>Category</b>	Polyclonal Antibodies
<b>Applications</b>	WB, IF	<b>Observed MW</b>	100kDa
<b>Cross-reactivity</b>	Human, Mouse, Rat	<b>Calculated MW</b>	57kDa

### Immunogen Information

<b>Immunogen</b>	Recombinant fusion protein containing a sequence corresponding to amino acids 250-480 of human ICAM1 (NP_000192.2).
<b>Gene ID</b>	3383
<b>Swiss prot</b>	P05362
<b>Synonyms</b>	BB2;CD54;P3.58;ICAM1

### Product information

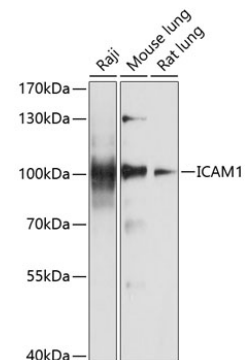
<b>Source</b>	Rabbit
<b>Isotype</b>	IgG
<b>Purification method</b>	Affinity purification
<b>Storage</b>	Store at -20°C. Avoid freeze / thaw cycles. Buffer: PBS with 0.02% sodium azide, 50% glycerol, pH7.3.

### Background

This gene encodes a cell surface glycoprotein which is typically expressed on endothelial cells and cells of the immune system. It binds to integrins of type CD11a / CD18, or CD11b / CD18 and is also exploited by Rhinovirus as a receptor.

### Recommended Dilutions

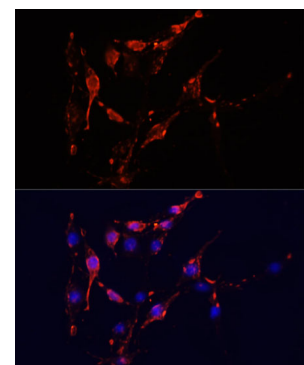
WB	1:500 - 1:2000
IF	1:50 - 1:200



Western blot analysis of extracts of various cell lines, using ICAM1 antibody (A5597) at 1:1000 dilution. Secondary antibody: HRP Goat Anti-Rabbit IgG (H+L) (AS014) at 1:10000 dilution.

Lysates/proteins: 25ug per lane.  
Blocking buffer: 3% nonfat dry milk in TBST.

Detection: ECL Basic Kit (RM00020).  
Exposure time: 15s.



Immunofluorescence analysis of PC12 cells using ICAM1 antibody (A5597) at dilution of 1:100. Blue: DAPI for nuclear staining.