

A5552

Leader in Biomolecular Solutions for Life Science



## Kinesin light chain 1 (KLC1) Rabbit pAb

Catalog No.: A5552

### Basic Information

**Observed MW**

60-75kDa

**Calculated MW**

65kDa

**Category**

Polyclonal Antibody

**Applications**

WB,IHC-P,ELISA

**Cross-Reactivity**

Human,Mouse,Rat

### Background

Conventional kinesin is a tetrameric molecule composed of two heavy chains and two light chains, and transports various cargos along microtubules toward their plus ends. The heavy chains provide the motor activity, while the light chains bind to various cargos. This gene encodes a member of the kinesin light chain family. It associates with kinesin heavy chain through an N-terminal domain, and six tetratricopeptide repeat (TPR) motifs are thought to be involved in binding of cargos such as vesicles, mitochondria, and the Golgi complex. Thus, kinesin light chains function as adapter molecules and not motors per se. Although previously named "kinesin 2", this gene is not a member of the kinesin-2 / kinesin heavy chain subfamily of kinesin motor proteins. Extensive alternative splicing produces isoforms with different C-termini that are proposed to bind to different cargos; however, the full-length nature and/or biological validity of most of these variants have not been determined.

### Recommended Dilutions

WB	1:500 - 1:2000
IHC-P	1:50 - 1:200

### Immunogen Information

**Gene ID**

3831

**Swiss Prot**

Q07866

**Immunogen**

Recombinant fusion protein containing a sequence corresponding to amino acids 261-560 of human Kinesin light chain 1 (Kinesin light chain 1 (KLC1)) (NP\_005543.2).

**Synonyms**

KLC; KNS2; KNS2A; Kinesin light chain 1 (KLC1)

### Contact



[www.abclonal.com](http://www.abclonal.com)

### Product Information

**Source**

Rabbit

**Isotype**

IgG

**Purification**

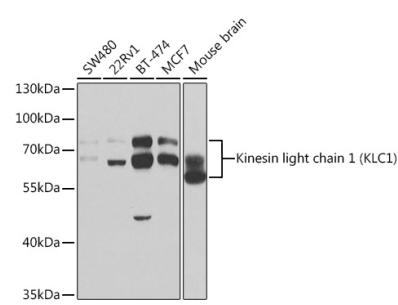
Affinity purification

**Storage**

Store at -20°C. Avoid freeze / thaw cycles.

Buffer: PBS with 0.02% sodium azide,50% glycerol,pH7.3.

Validation Data



Western blot analysis of extracts of various cell lines, using Kinesin light chain 1 (Kinesin light chain 1 (KLC1)) antibody (A5552) at 1:1000 dilution.  
Secondary antibody: HRP Goat Anti-Rabbit IgG (H+L) (AS014) at 1:10000 dilution.  
Lysates/proteins: 25µg per lane.  
Blocking buffer: 3% nonfat dry milk in TBST.