

A5550

Leader in Biomolecular Solutions for Life Science



## FZR1 Rabbit pAb

Catalog No.: A5550

### Basic Information

**Observed MW**

55kDa

**Calculated MW**

55kDa

**Category**

Polyclonal Antibody

**Applications**

WB,IF/ICC,ELISA

**Cross-Reactivity**

Human,Mouse,Rat

### Background

Predicted to enable anaphase-promoting complex binding activity and ubiquitin ligase activator activity. Involved in anaphase-promoting complex-dependent catabolic process; mitotic G2 DNA damage checkpoint signaling; and positive regulation of protein metabolic process. Located in nuclear membrane and nucleoplasm. Colocalizes with anaphase-promoting complex.

### Recommended Dilutions

<b>WB</b>	1:100 - 1:500
<b>IF/ICC</b>	1:50 - 1:200

### Immunogen Information

**Gene ID**

51343

**Swiss Prot**

Q9UM11

**Immunogen**

Recombinant fusion protein containing a sequence corresponding to amino acids 224-493 of human FZR1 (NP\_057347.2).

**Synonyms**

FZR; CDH1; FZR2; HCDH; HCDH1; CDC20C; DEE109; FZR1

### Contact



[www.abclonal.com](http://www.abclonal.com)

### Product Information

**Source**

Rabbit

**Isotype**

IgG

**Purification**

Affinity purification

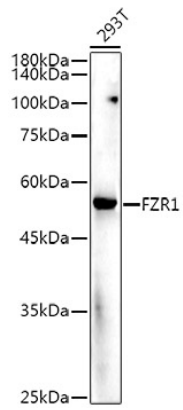
**Storage**

Store at -20°C. Avoid freeze / thaw cycles.

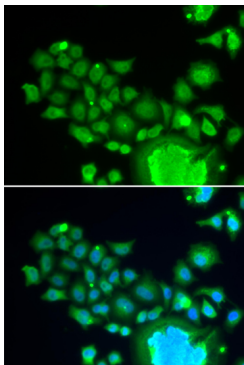
Buffer: PBS with 0.05% proclin300,50% glycerol,pH7.3.

## Validation Data

---



Western blot analysis of extracts of 293T cells, using FZR1 antibody (A5550) at 1:500 dilution.  
Secondary antibody: HRP Goat Anti-Rabbit IgG (H+L) (A5014) at 1:10000 dilution.  
Lysates/proteins: 25µg per lane.  
Blocking buffer: 3% nonfat dry milk in TBST.  
Detection: ECL Enhanced Kit (RM00021).  
Exposure time: 180s.



Immunofluorescence analysis of HeLa cells using FZR1 antibody (A5550). Blue: DAPI for nuclear staining.