

NRF1 Rabbit pAb

Catalog No.: A5547 **8 Publications**

Basic Information

Observed MW

70kDa

Calculated MW

54kDa

Category

Primary antibody

Applications

ELISA, WB, ChIP

Cross-Reactivity

Human, Mouse, Rat

Background

This gene encodes a protein that homodimerizes and functions as a transcription factor which activates the expression of some key metabolic genes regulating cellular growth and nuclear genes required for respiration, heme biosynthesis, and mitochondrial DNA transcription and replication. The protein has also been associated with the regulation of neurite outgrowth. Alternative splicing results in multiple transcript variants.

Confusion has occurred in bibliographic databases due to the shared symbol of NRF1 for this gene and for "nuclear factor (erythroid-derived 2)-like 1" which has an official symbol of NFE2L1.

Recommended Dilutions

WB 1:500 - 1:1000**ChIP** 5µg antibody for
10µg-15µg of
Chromatin

Immunogen Information

Gene ID

4899

Swiss Prot

Q16656

Immunogen

Recombinant fusion protein containing a sequence corresponding to amino acids 240-449 of human NRF1 (NP_001035199.1).

Synonyms

ALPHA-PAL; NRF1

Contact

 | www.abclonal.com

Product Information

Source

Rabbit

Isotype

IgG

Purification

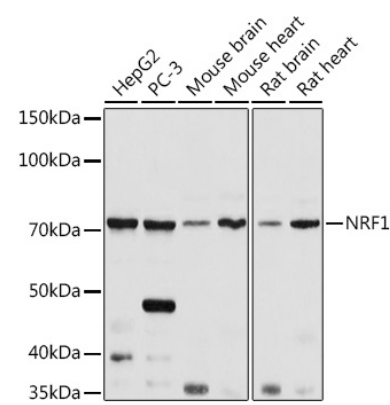
Affinity purification

Storage

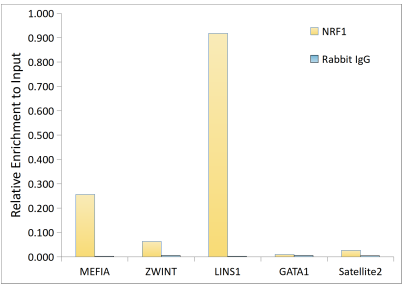
Store at -20°C. Avoid freeze / thaw cycles.

Buffer: PBS with 0.02% sodium azide, 50% glycerol, pH7.3.

Validation Data



Western blot analysis of various lysates using NRF1 Rabbit pAb (A5547) at 1:1000 dilution. Secondary antibody: HRP Goat Anti-Rabbit IgG (H+L) (A5014) at 1:10000 dilution. Lysates/proteins: 25µg per lane. Blocking buffer: 3% nonfat dry milk in TBST. Detection: ECL Basic Kit (RM00020). Exposure time: 5s.



Chromatin immunoprecipitation analysis of extracts of HepG2 cells, using NRF1 antibody (A5547) and rabbit IgG. The amount of immunoprecipitated DNA was checked by quantitative PCR. Histogram was constructed by the ratios of the immunoprecipitated DNA to the input.