

A5542

Leader in Biomolecular Solutions for Life Science



CGRP Rabbit pAb

Catalog No.: A5542

11 Publications

Basic Information

Observed MW

14kDa

Calculated MW

13kDa/15kDa

Category

Polyclonal Antibody

Applications

WB, IF/ICC, ELISA

Cross-Reactivity

Human, Mouse, Rat

Background

This gene encodes the peptide hormones calcitonin, calcitonin gene-related peptide and katacalcin by tissue-specific alternative RNA splicing of the gene transcripts and cleavage of inactive precursor proteins. Calcitonin is involved in calcium regulation and acts to regulate phosphorus metabolism. Calcitonin gene-related peptide functions as a vasodilator and as an antimicrobial peptide while katacalcin is a calcium-lowering peptide. Multiple transcript variants encoding different isoforms have been found for this gene.

Recommended Dilutions

WB 1:1000 - 1:5000

IF/ICC 1:50 - 1:200

Immunogen Information

Gene ID

796

Swiss Prot

P01258/P06881

Immunogen

A synthetic peptide corresponding to a sequence within amino acids 49-128 of human CGRP (NP_001029125.1).

Synonyms

CT; KC; PCT; CGRP; CALC1; CGRP1; CGRP-I; CGRP-alpha

Contact



www.abclonal.com

Product Information

Source

Rabbit

Isotype

IgG

Purification

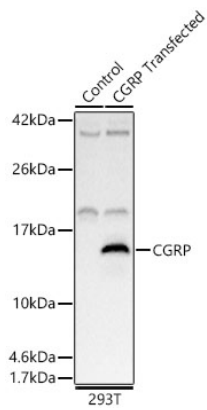
Affinity purification

Storage

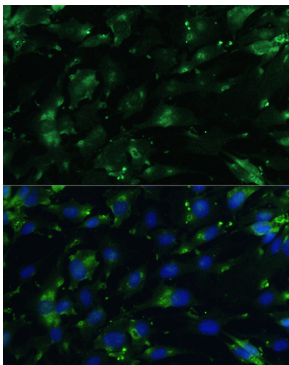
Store at -20°C. Avoid freeze / thaw cycles.

Buffer: PBS with 0.05% proclin300, 50% glycerol, pH7.3.

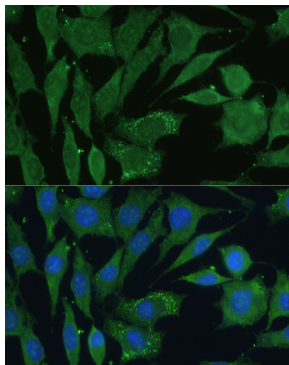
Validation Data



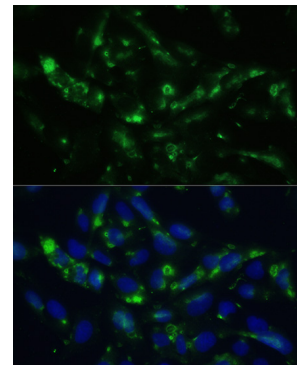
Western blot analysis of lysates from wild type (WT) and 293T cells transfected with CGRP using CGRP Rabbit pAb(A5542) at 1:2000 dilution.
 Secondary antibody: HRP Goat Anti-Rabbit IgG (H+L) (AS014) at 1:10000 dilution.
 Lysates/proteins: 25 µg per lane.
 Blocking buffer: 3% nonfat dry milk in TBST.
 Detection: ECL Basic Kit (RM00020).
 Exposure time: 1s.



Immunofluorescence analysis of C6 cells using CGRP Rabbit pAb (A5542) at dilution of 1:100. Blue: DAPI for nuclear staining.



Immunofluorescence analysis of L929 cells using CGRP Rabbit pAb (A5542) at dilution of 1:100. Blue: DAPI for nuclear staining.



Immunofluorescence analysis of U2OS cells using CGRP Rabbit pAb (A5542) at dilution of 1:100. Blue: DAPI for nuclear staining.