

A5499

Leader in Biomolecular Solutions for Life Science



## UBE2C Rabbit pAb

Catalog No.: A5499

7 Publications

### Basic Information

#### Observed MW

21kDa

#### Calculated MW

20kDa

#### Category

Polyclonal Antibody

#### Applications

WB, IHC-P, IF/ICC, IP, ELISA

#### Cross-Reactivity

Human, Mouse, Rat

### Background

The modification of proteins with ubiquitin is an important cellular mechanism for targeting abnormal or short-lived proteins for degradation. Ubiquitination involves at least three classes of enzymes: ubiquitin-activating enzymes, ubiquitin-conjugating enzymes, and ubiquitin-protein ligases. This gene encodes a member of the E2 ubiquitin-conjugating enzyme family. The encoded protein is required for the destruction of mitotic cyclins and for cell cycle progression, and may be involved in cancer progression. Multiple transcript variants encoding different isoforms have been found for this gene. Pseudogenes of this gene have been defined on chromosomes 4, 14, 15, 18, and 19.

### Recommended Dilutions

|        |  |
|--------|--|
| WB     | 1:100 - 1:500  |
| IHC-P  | 1:50 - 1:200   |
| IF/ICC | 1:50 - 1:200   |
| IP     | 0.5µg-4µg antibody for<br>200µg-400µg extracts of<br>whole cells |

### Immunogen Information

|         |            |
|---------|------------|
| Gene ID | Swiss Prot |
| 11065   | 000762     |

#### Immunogen

Recombinant fusion protein containing a sequence corresponding to amino acids 1-179 of human UBE2C (NP\_008950.1).

#### Synonyms

UBCH10; dj447F3.2; UBE2C

### Contact



[www.abclonal.com](http://www.abclonal.com)

### Product Information

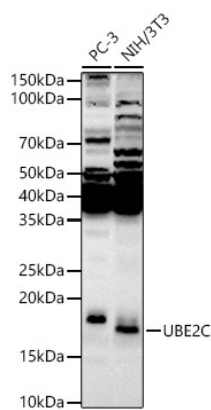
|        |         |                       |
|--------|---------|-----------------------|
| Source | Isotype | Purification          |
| Rabbit | IgG     | Affinity purification |

#### Storage

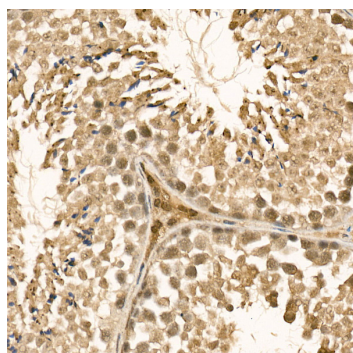
Store at -20°C. Avoid freeze / thaw cycles.

Buffer: PBS with 0.01% thimerosal, 50% glycerol, pH7.3.

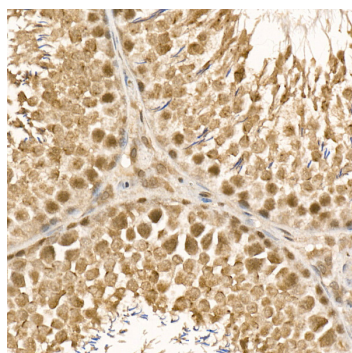
## Validation Data



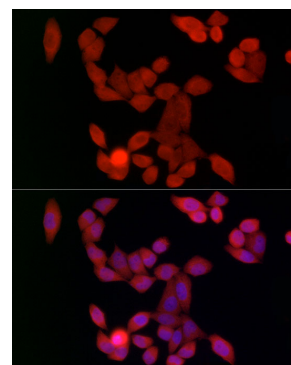
Western blot analysis of various lysates, using UBE2C Rabbit pAb (A5499) at 1:500 dilution. Secondary antibody: HRP Goat Anti-Rabbit IgG (H+L) (AS014) at 1:10000 dilution. Lysates/proteins: 25µg per lane. Blocking buffer: 3% nonfat dry milk in TBST. Detection: ECL Enhanced Kit (RM00021). Exposure time: 90s.



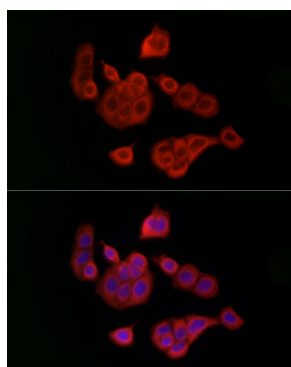
Immunohistochemistry analysis of UBE2C in paraffin-embedded mouse testis using UBE2C Rabbit pAb (A5499) at dilution of 1:100 (40x lens). Perform high pressure antigen retrieval with 10 mM citrate buffer pH 6.0 before commencing with IHC staining protocol.



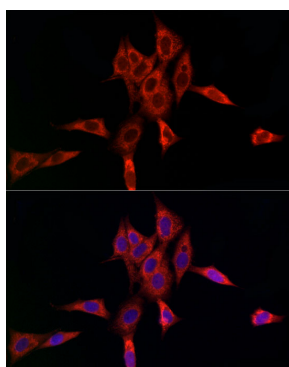
Immunohistochemistry analysis of UBE2C in paraffin-embedded rat testis using UBE2C Rabbit pAb (A5499) at dilution of 1:100 (40x lens). Perform high pressure antigen retrieval with 10 mM citrate buffer pH 6.0 before commencing with IHC staining protocol.



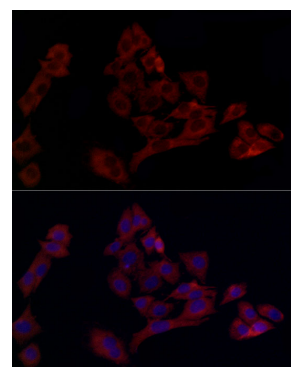
Immunofluorescence analysis of HeLa cells using UBE2C Rabbit pAb (A5499) at dilution of 1:100 (40x lens). Secondary antibody: Cy3 Goat Anti-Rabbit IgG (H+L) (AS007) at 1:500 dilution. Blue: DAPI for nuclear staining.



Immunofluorescence analysis of MCF7 cells using UBE2C Rabbit pAb (A5499) at dilution of 1:100 (40x lens). Secondary antibody: Cy3 Goat Anti-Rabbit IgG (H+L) (AS007) at 1:500 dilution. Blue: DAPI for nuclear staining.



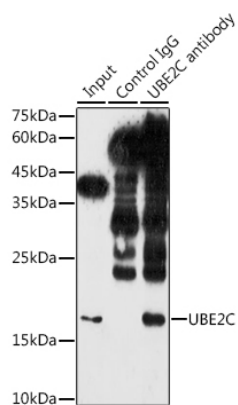
Immunofluorescence analysis of NIH/3T3 cells using UBE2C Rabbit pAb (A5499) at dilution of 1:100 (40x lens). Secondary antibody: Cy3 Goat Anti-Rabbit IgG (H+L) (AS007) at 1:500 dilution. Blue: DAPI for nuclear staining.



Immunofluorescence analysis of PC-12 cells using UBE2C Rabbit pAb (A5499) at dilution of 1:100 (40x lens). Secondary antibody: Cy3 Goat Anti-Rabbit IgG (H+L) (AS007) at 1:500 dilution. Blue: DAPI for nuclear staining.

## Validation Data

---



Immunoprecipitation analysis of 300 µg extracts of NIH/3T3 cells using 3 µg UBE2C antibody (A5499). Western blot was performed from the immunoprecipitate using UBE2C antibody (A5499) at a dilution of 1:1000.