

A5498

Leader in Biomolecular Solutions for Life Science



## IL27 Rabbit pAb

Catalog No.: A5498

### Basic Information

**Observed MW**

55kDa

**Calculated MW**

27kDa

**Category**

Polyclonal Antibody

**Applications**

WB, ELISA

**Cross-Reactivity**

Human, Mouse

### Background

The protein encoded by this gene is one of the subunits of a heterodimeric cytokine complex. This protein is related to interleukin 12A (IL12A). It interacts with Epstein-Barr virus induced gene 3 (EBI3), a protein similar to interleukin 12B (IL12B), and forms a complex that has been shown to drive rapid expansion of naive but not memory CD4(+) T cells. The complex is also found to synergize strongly with interleukin 12 to trigger interferon gamma (IFNG) production of naive CD4(+) T cells. The biological effects of this cytokine are mediated by the class I cytokine receptor (WSX1/TCRR).

### Recommended Dilutions

WB 1:500 - 1:2000

### Immunogen Information

**Gene ID**

246778

**Swiss Prot**

Q8NEV9

**Immunogen**

Recombinant fusion protein containing a sequence corresponding to amino acids 29-243 of human IL27 (NP\_663634.2).

**Synonyms**

p28; IL30; IL-27; IL27A; IL-27A; IL27p28; IL27

### Contact



[www.abclonal.com](http://www.abclonal.com)

### Product Information

**Source**

Rabbit

**Isotype**

IgG

**Purification**

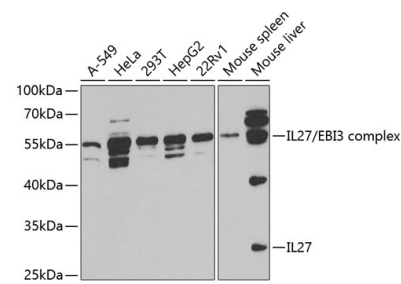
Affinity purification

**Storage**

Store at -20°C. Avoid freeze / thaw cycles.

Buffer: PBS with 0.02% sodium azide, 50% glycerol, pH 7.3.

Validation Data



Western blot analysis of various lysates using IL27 Rabbit pAb (A5498) at 1:1000 dilution.  
Secondary antibody: HRP Goat Anti-Rabbit IgG (H+L) (AS014) at 1:10000 dilution.  
Lysates/proteins: 25μg per lane.  
Blocking buffer: 3% nonfat dry milk in TBST.  
Detection: ECL Basic Kit (RM00020).  
Exposure time: 90s.