

[KD Validated] NDUFA13/GRIM19 Rabbit pAb

Catalog No.: A5412 **3 Publications**

Basic Information

Observed MW

17kDa

Calculated MW

17kDa

Category

Primary antibody

Applications

ELISA, WB

Cross-Reactivity

Human, Mouse, Rat

Background

This gene encodes a subunit of the mitochondrial membrane respiratory chain NADH dehydrogenase (Complex I), which functions in the transfer of electrons from NADH to the respiratory chain. The protein is required for complex I assembly and electron transfer activity. The protein binds the signal transducers and activators of transcription 3 (STAT3) transcription factor, and can function as a tumor suppressor. The human protein purified from mitochondria migrates at approximately 16 kDa. Transcripts originating from an upstream promoter and capable of expressing a protein with a longer N-terminus have been found, but their biological validity has not been determined.

Recommended Dilutions

WB 1:500 - 1:1000

Immunogen Information

Gene ID

51079

Swiss Prot

Q9P0J0

Immunogen

Recombinant fusion protein containing a sequence corresponding to amino acids 1-144 of human NDUFA13/GRIM19 (NP_057049.5).

Synonyms

B16.6; CDA016; CGI-39; GRIM19; GRIM-19; MC1DN28; [KD Validated] NDUFA13/GRIM19

Contact

 | www.abclonal.com

Product Information

Source

Rabbit

Isotype

IgG

Purification

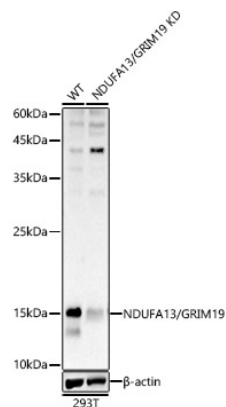
Affinity purification

Storage

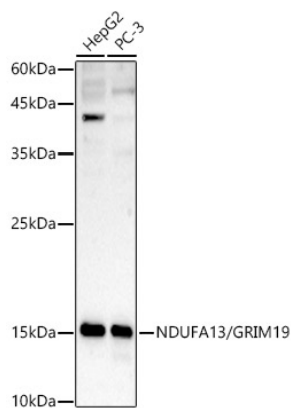
Store at -20°C. Avoid freeze / thaw cycles.

Buffer: PBS with 0.01% thimerosal, 50% glycerol, pH 7.3.

Validation Data



Western blot analysis of lysates from wild type(WT) and NDUFA13/GRIM19 Rabbit pAb knockdown (KD) 293T cells, using [KD Validated] NDUFA13/GRIM19 Rabbit pAb (A5412) at 1:1000 dilution. Secondary antibody: HRP Goat Anti-Rabbit IgG (H+L) (AS014) at 1:10000 dilution. Lysates/proteins: 25µg per lane. Blocking buffer: 3% nonfat dry milk in TBST. Detection: ECL Enhanced Kit (RM00021). Exposure time: 90s.



Western blot analysis of various lysates, using [KD Validated] NDUFA13/GRIM19 Rabbit pAb (A5412) at 1:1000 dilution. Secondary antibody: HRP Goat Anti-Rabbit IgG (H+L) (AS014) at 1:10000 dilution. Lysates/proteins: 25µg per lane. Blocking buffer: 3% nonfat dry milk in TBST. Detection: ECL Enhanced Kit (RM00021). Exposure time: 90s.