

A5411

Leader in Biomolecular Solutions for Life Science



## HEC1/NDC80 Rabbit pAb

Catalog No.: A5411

### Basic Information

**Observed MW**

80kDa

**Calculated MW**

74kDa

**Category**

Polyclonal Antibody

**Applications**

WB,ELISA

**Cross-Reactivity**

Human,Mouse

### Background

This gene encodes a component of the NDC80 kinetochore complex. The encoded protein consists of an N-terminal microtubule binding domain and a C-terminal coiled-coiled domain that interacts with other components of the complex. This protein functions to organize and stabilize microtubule-kinetochore interactions and is required for proper chromosome segregation.

### Recommended Dilutions

WB 1:500 - 1:2000

### Immunogen Information

**Gene ID**

10403

**Swiss Prot**

O14777

**Immunogen**

Recombinant fusion protein containing a sequence corresponding to amino acids 343-642 of human HEC1/HEC1/NDC80 (NP\_006092.1).

**Synonyms**

HEC; HEC1; TID3; KNTC2; HsHec1; hsNDC80; HEC1/NDC80

### Contact



[www.abclonal.com](http://www.abclonal.com)

### Product Information

**Source**

Rabbit

**Isotype**

IgG

**Purification**

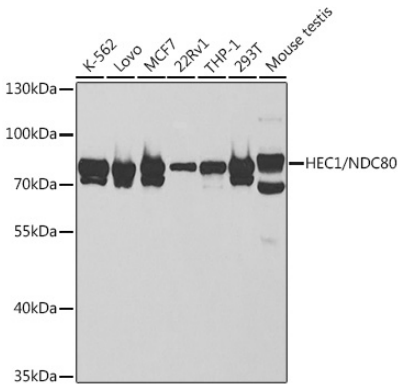
Affinity purification

**Storage**

Store at -20°C. Avoid freeze / thaw cycles.

Buffer: PBS with 0.02% sodium azide,50% glycerol,pH7.3.

# Validation Data



Western blot analysis of extracts of various cell lines, using HEC1/HEC1/NDC80 antibody (A5411) at 1:1000 dilution.  
Secondary antibody: HRP Goat Anti-Rabbit IgG (H+L) (AS014) at 1:10000 dilution.  
Lysates/proteins: 25µg per lane.  
Blocking buffer: 3% nonfat dry milk in TBST.  
Detection: ECL Basic Kit (RM00020).  
Exposure time: 60s.