

A5404

Leader in Biomolecular Solutions for Life Science



## [KO Validated] EEF2K Rabbit pAb

Catalog No.: A5404 **KO** Validated

### Basic Information

#### Observed MW

110kDa

#### Calculated MW

82kDa

#### Category

Mouse Monoclonal Antibody

#### Applications

WB,IF/ICC,ELISA

#### Cross-Reactivity

Human,Mouse

### Background

This gene encodes a highly conserved protein kinase in the calmodulin-mediated signaling pathway that links activation of cell surface receptors to cell division. This kinase is involved in the regulation of protein synthesis. It phosphorylates eukaryotic elongation factor 2 (EEF2) and thus inhibits the EEF2 function. The activity of this kinase is increased in many cancers and may be a valid target for anti-cancer treatment.

### Recommended Dilutions

WB	1:500 - 1:2000
IF/ICC	1:50 - 1:200

### Immunogen Information

#### Gene ID

29904

#### Swiss Prot

O00418

#### Immunogen

Recombinant fusion protein containing a sequence corresponding to amino acids 406-725 of human EEF2K (NP\_037434.1).

#### Synonyms

eEF-2K; CaMKIII; HSU93850; 2K

### Contact



[www.abclonal.com](http://www.abclonal.com)

### Product Information

#### Source

Rabbit

#### Isotype

IgG

#### Purification

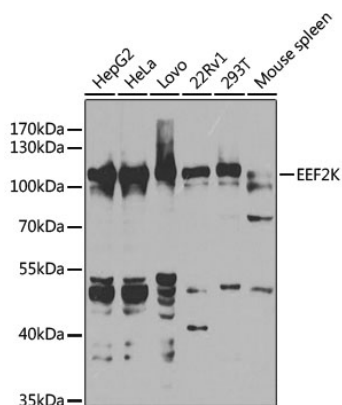
Affinity purification

#### Storage

Store at -20°C. Avoid freeze / thaw cycles.

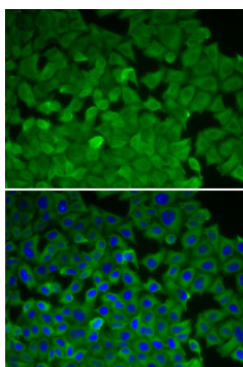
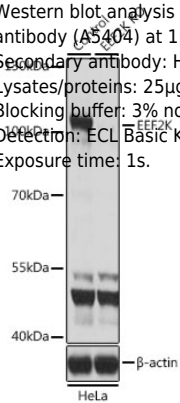
Buffer: PBS with 0.02% sodium azide,50% glycerol,pH7.3.

## Validation Data



Western blot analysis of extracts of various cell lines, using EEF2K antibody (A5404) at 1:1000 dilution.  
 Secondary antibody: HRP Goat Anti-Rabbit IgG (H+L) (A5014) at 1:10000 dilution.  
 Lysates/proteins: 25µg per lane.  
 Blocking buffer: 3% nonfat dry milk in TBST.  
 Detection: ECL Basic Kit (RM00020).  
 Exposure time: 40s.

Western blot analysis of extracts from normal (control) and EEF2K knockout (KO) HeLa cells, using EEF2K antibody (A5404) at 1:1000 dilution.  
 Secondary antibody: HRP Goat Anti-Rabbit IgG (H+L) (A5014) at 1:10000 dilution.  
 Lysates/proteins: 25µg per lane.  
 Blocking buffer: 3% nonfat dry milk in TBST.  
 Detection: ECL Basic Kit (RM00020).  
 Exposure time: 1s.



Immunofluorescence analysis of A-549 cells using EEF2K antibody (A5404). Blue: DAPI for nuclear staining.