

EED Rabbit pAb

Catalog No.: A5371 **1 Publications**

Basic Information

Observed MW

50-70kDa

Calculated MW

50kDa

Category

Primary antibody

Applications

ELISA, WB, IP, IF/ICC

Cross-Reactivity

Human, Mouse, Rat

Background

This gene encodes a member of the Polycomb-group (PcG) family. PcG family members form multimeric protein complexes, which are involved in maintaining the transcriptional repressive state of genes over successive cell generations. This protein interacts with enhancer of zeste 2, the cytoplasmic tail of integrin beta7, immunodeficiency virus type 1 (HIV-1) MA protein, and histone deacetylase proteins. This protein mediates repression of gene activity through histone deacetylation, and may act as a specific regulator of integrin function. Two transcript variants encoding distinct isoforms have been identified for this gene.

Recommended Dilutions

WB	1:500 - 1:2000
IP	0.5µg-4µg antibody for 200µg-400µg extracts of whole cells
IF/ICC	1:50 - 1:200

Immunogen Information

Gene ID	Swiss Prot
8726	O75530

Immunogen

Recombinant fusion protein containing a sequence corresponding to amino acids 1-400 of human EED (NP_694536.1).

Synonyms

HEED; COG1; WAIT1; EED

Contact

 | www.abclonal.com

Product Information

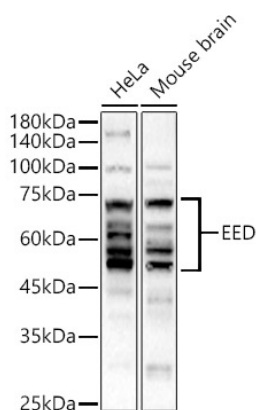
Source	Isotype	Purification
Rabbit	IgG	Affinity purification

Storage

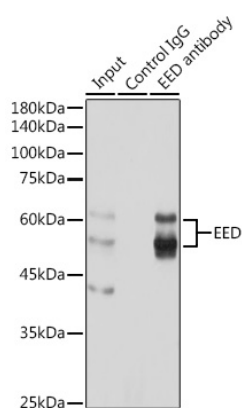
Store at -20°C. Avoid freeze / thaw cycles.

Buffer: PBS with 0.02% sodium azide, 50% glycerol, pH7.3.

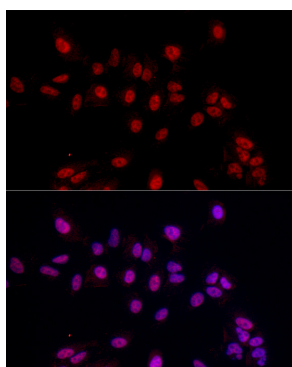
Validation Data



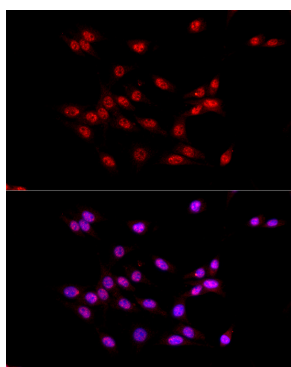
Western blot analysis of various lysates, using EED Rabbit pAb (A5371) at 1:500 dilution.
 Secondary antibody: HRP Goat Anti-Rabbit IgG (H+L) (AS014) at 1:10000 dilution.
 Lysates/proteins: 25ug per lane.
 Blocking buffer: 3% nonfat dry milk in TBST.
 Detection: ECL Basic Kit (RM00020).
 Exposure time: 180s.



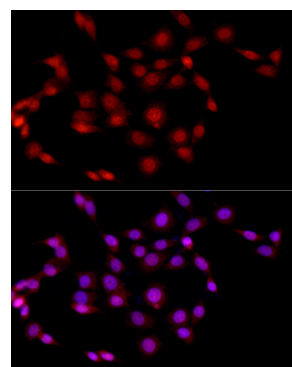
Immunoprecipitation analysis of 300 µg extracts of HeLa cells using 3 µg EED antibody (A5371).
 Western blot was performed from the immunoprecipitate using EED antibody (A5371) at a dilution of 1:1000.



Immunofluorescence analysis of A-549 cells using EED Rabbit pAb (A5371) at dilution of 1:50 (40x lens). Secondary antibody: Cy3 Goat Anti-Rabbit IgG (H+L) (AS007) at 1:500 dilution. Blue: DAPI for nuclear staining.



Immunofluorescence analysis of C6 cells using EED Rabbit pAb (A5371) at dilution of 1:50 (40x lens). Secondary antibody: Cy3 Goat Anti-Rabbit IgG (H+L) (AS007) at 1:500 dilution. Blue: DAPI for nuclear staining.



Immunofluorescence analysis of NIH/3T3 cells using EED Rabbit pAb (A5371) at dilution of 1:50 (40x lens). Secondary antibody: Cy3 Goat Anti-Rabbit IgG (H+L) (AS007) at 1:500 dilution. Blue: DAPI for nuclear staining.