

A5344

Leader in Biomolecular Solutions for Life Science



GM130 Rabbit pAb

Catalog No.: A5344

17 Publications

Basic Information

Observed MW

130kDa

Calculated MW

113kDa

Category

Mouse Monoclonal Antibody

Applications

WB, IHC-P, IF/ICC, ELISA

Cross-Reactivity

Human, Mouse, Rat

Background

The Golgi apparatus, which participates in glycosylation and transport of proteins and lipids in the secretory pathway, consists of a series of stacked cisternae (flattened membrane sacs). Interactions between the Golgi and microtubules are thought to be important for the reorganization of the Golgi after it fragments during mitosis. This gene encodes one of the golgins, a family of proteins localized to the Golgi. This encoded protein has been postulated to play roles in the stacking of Golgi cisternae and in vesicular transport. Several alternatively spliced transcript variants of this gene have been described, but the full-length nature of these variants has not been determined.

Recommended Dilutions

WB	1:1000 - 1:5000
IHC-P	1:50 - 1:200
IF/ICC	1:100 - 1:500

Immunogen Information

Gene ID

2801

Swiss Prot

Q08379

Immunogen

Recombinant fusion protein containing a sequence corresponding to amino acids 20-300 of human GM130 (NP_004477.3).

Synonyms

GM130; DEDHMB

Contact



www.abclonal.com

Product Information

Source

Rabbit

Isotype

IgG

Purification

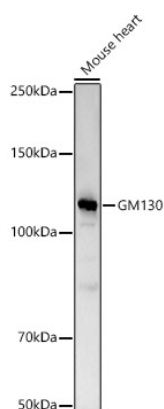
Affinity purification

Storage

Store at -20°C. Avoid freeze / thaw cycles.

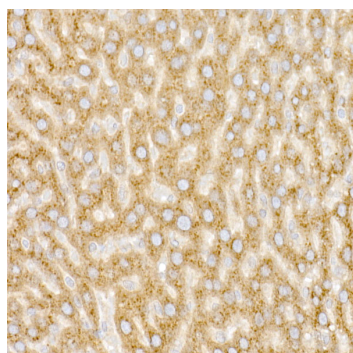
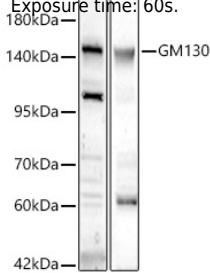
Buffer: PBS with 0.05% proclin300, 50% glycerol, pH7.3.

Validation Data

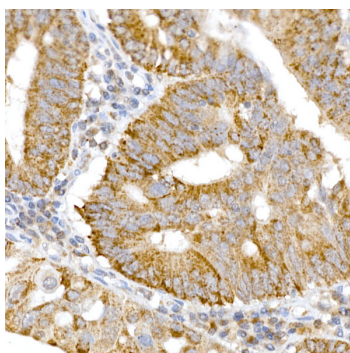


Western blot analysis of Mouse heart, using GM130 antibody (A5344) at 1:2000 dilution.
 Secondary antibody: HRP Goat Anti-Rabbit IgG (H+L) (A5014) at 1:10000 dilution.
 Lysates/proteins: 25µg per lane.
 Blocking buffer: 3% nonfat dry milk in TBST.
 Detection: ECL Basic Kit (RM00020).
 Exposure time: 60s.

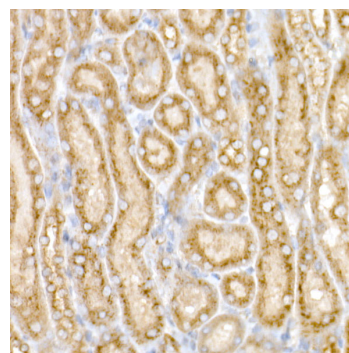
Western blot analysis of various lysates, using GM130 Rabbit pAb (A5344) at 1:700 dilution.
 Secondary antibody: HRP Goat Anti-Rabbit IgG (H+L) (A5014) at 1:10000 dilution.
 Lysates/proteins: 25ug per lane.
 Blocking buffer: 3% nonfat dry milk in TBST.
 Detection: ECL Basic Kit (RM00020).
 Exposure time: 60s.



Immunohistochemistry analysis of paraffin-embedded Rat liver using GM130 antibody (A5344) at dilution of 1:20 (40x lens). Perform high pressure antigen retrieval with 10 mM citrate buffer pH 6.0 before commencing with IHC staining protocol.

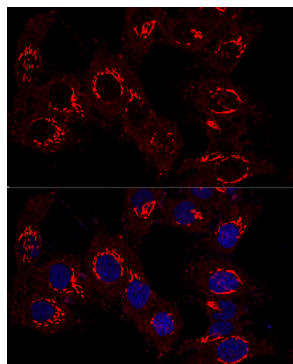


Immunohistochemistry analysis of paraffin-embedded human colon carcinoma using GM130 antibody (A5344) at dilution of 1:20 (40x lens). Perform high pressure antigen retrieval with 10 mM citrate buffer pH 6.0 before commencing with IHC staining protocol.

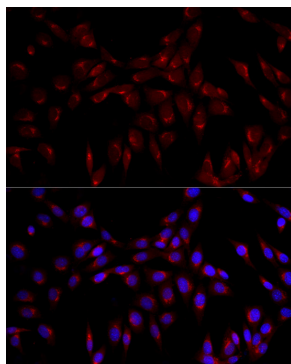


Immunohistochemistry analysis of paraffin-embedded Mouse kidney using GM130 antibody (A5344) at dilution of 1:20 (40x lens). Perform high pressure antigen retrieval with 10 mM citrate buffer pH 6.0 before commencing with IHC staining protocol.

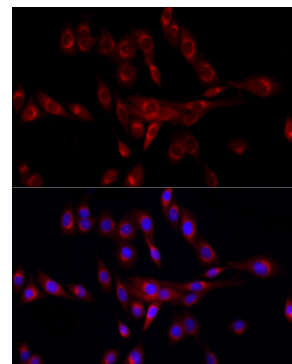
Validation Data



Confocal immunofluorescence analysis of HeLa cells using GM130 antibody (A5344) at dilution of 1:400. Blue: DAPI for nuclear staining.



Immunofluorescence analysis of NIH/3T3 cells using GM130 Rabbit pAb (A5344) at dilution of 1:100 (40x lens). Blue: DAPI for nuclear staining.



Immunofluorescence analysis of PC-12 cells using GM130 Rabbit pAb (A5344) at dilution of 1:100 (40x lens). Blue: DAPI for nuclear staining.