

A5294

Leader in Biomolecular Solutions for Life Science



eIF4A1 Rabbit pAb

Catalog No.: A5294

5 Publications

Basic Information

Observed MW

48kDa

Calculated MW

46kDa

Category

Polyclonal Antibody

Applications

WB,IF/ICC,IP,ELISA

Cross-Reactivity

Human,Mouse,Rat

Background

Enables double-stranded RNA binding activity. Predicted to be involved in cytoplasmic translational initiation. Located in cytoplasm.

Recommended Dilutions

WB 1:1000 - 1:5000

IF/ICC 1:50 - 1:200

IP 0.5µg-4µg antibody for
200µg-400µg extracts of
whole cells

Immunogen Information

Gene ID

1973

Swiss Prot

P60842

Immunogen

A synthetic peptide corresponding to a sequence within amino acids 1-100 of human eIF4A1 (NP_001407.1).

Synonyms

DDX2A; EIF4A; EIF-4A; eIF4A-I; eIF-4A-I; eIF4A1

Contact



www.abclonal.com

Product Information

Source

Rabbit

Isotype

IgG

Purification

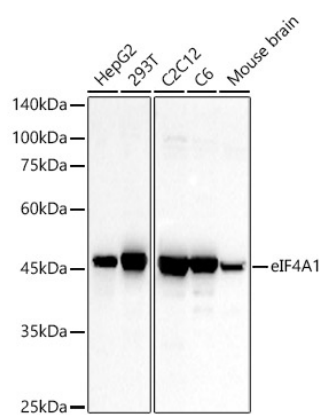
Affinity purification

Storage

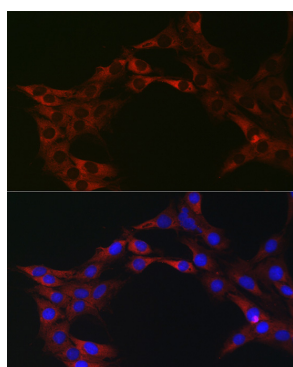
Store at -20°C. Avoid freeze / thaw cycles.

Buffer: PBS with 0.01% thimerosal,50% glycerol,pH7.3.

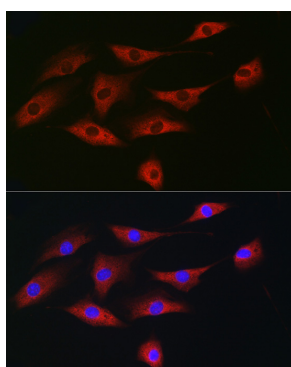
Validation Data



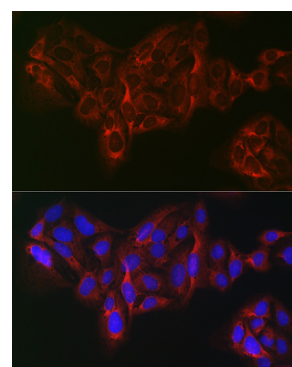
Western blot analysis of various lysates, using eIF4A1 Rabbit pAb (A5294) at 1:2000 dilution.
 Secondary antibody: HRP Goat Anti-Rabbit IgG (H+L) (A5014) at 1:10000 dilution.
 Lysates/proteins: 25µg per lane.
 Blocking buffer: 3% nonfat dry milk in TBST.
 Detection: ECL Basic Kit (RM00020).
 Exposure time: 30s.



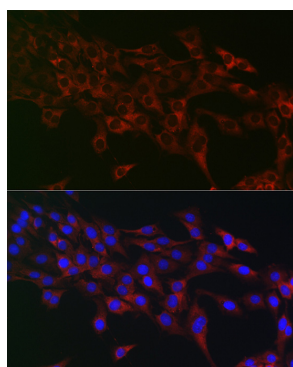
Immunofluorescence analysis of C6 cells using eIF4A1 Rabbit pAb (A5294) at dilution of 1:100 (40x lens). Secondary antibody: Cy3 Goat Anti-Rabbit IgG (H+L) (A5007) at 1:500 dilution. Blue: DAPI for nuclear staining.



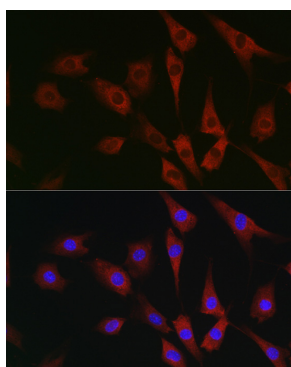
Immunofluorescence analysis of NIH/3T3 cells using eIF4A1 Rabbit pAb (A5294) at dilution of 1:100 (40x lens). Secondary antibody: Cy3 Goat Anti-Rabbit IgG (H+L) (A5007) at 1:500 dilution. Blue: DAPI for nuclear staining.



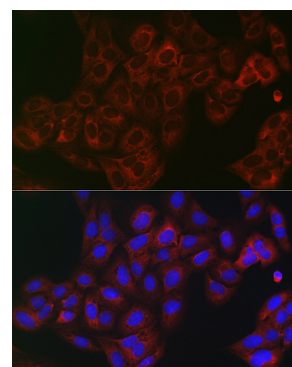
Immunofluorescence analysis of U2OS cells using eIF4A1 Rabbit pAb (A5294) at dilution of 1:100 (40x lens). Secondary antibody: Cy3 Goat Anti-Rabbit IgG (H+L) (A5007) at 1:500 dilution. Blue: DAPI for nuclear staining.



Immunofluorescence analysis of C6 cells using eIF4A1 Rabbit pAb (A5294) at dilution of 1:100 (40x lens). Secondary antibody: Cy3 Goat Anti-Rabbit IgG (H+L) (A5007) at 1:500 dilution. Blue: DAPI for nuclear staining.

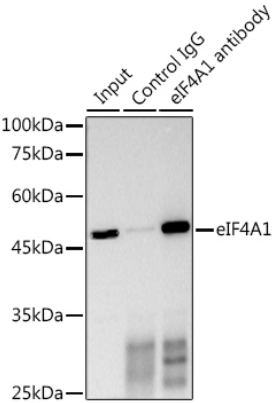


Immunofluorescence analysis of NIH/3T3 cells using eIF4A1 Rabbit pAb (A5294) at dilution of 1:100 (40x lens). Secondary antibody: Cy3 Goat Anti-Rabbit IgG (H+L) (A5007) at 1:500 dilution. Blue: DAPI for nuclear staining.



Immunofluorescence analysis of U2OS cells using eIF4A1 Rabbit pAb (A5294) at dilution of 1:100 (40x lens). Secondary antibody: Cy3 Goat Anti-Rabbit IgG (H+L) (A5007) at 1:500 dilution. Blue: DAPI for nuclear staining.

Validation Data



Immunoprecipitation analysis of 300 µg extracts of HeLa cells using 3 µg eIF4A1 antibody (A5294). Western blot was performed from the immunoprecipitate using eIF4A1 antibody (A5294) at a dilution of 1:1000.