

A5256

Leader in Biomolecular Solutions for Life Science



## KMT5A/SETD8 Rabbit pAb

Catalog No.: A5256

### Basic Information

**Observed MW**

45kDa

**Calculated MW**

43kDa

**Category**

Polyclonal Antibody

**Applications**

WB,IF/ICC,ELISA

**Cross-Reactivity**

Human,Mouse,Rat

### Background

The protein encoded by this gene is a protein-lysine N-methyltransferase that can monomethylate Lys-20 of histone H4 to effect transcriptional repression of some genes. The encoded protein is required for cell proliferation and plays a role in chromatin condensation.

### Recommended Dilutions

<b>WB</b>	1:500 - 1:1000
<b>IF/ICC</b>	1:50 - 1:200

### Immunogen Information

**Gene ID**

387893

**Swiss Prot**

Q9NQR1

**Immunogen**

Recombinant protein of human KMT5A/KMT5A/SETD8

**Synonyms**

SET8; SET07; SETD8; PR-Set7; PR/SET07; KMT5A/SETD8

### Contact



[www.abclonal.com](http://www.abclonal.com)

### Product Information

**Source**

Rabbit

**Isotype**

IgG

**Purification**

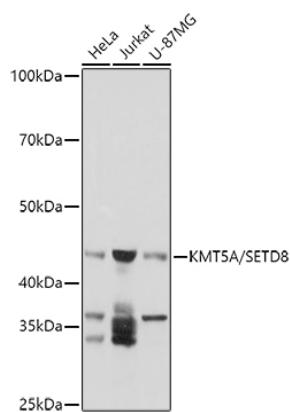
Affinity purification

**Storage**

Store at -20°C. Avoid freeze / thaw cycles.

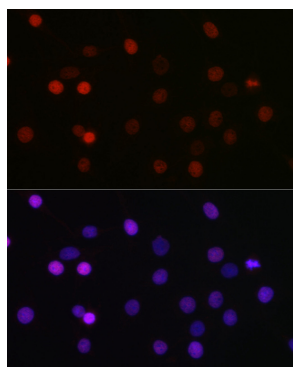
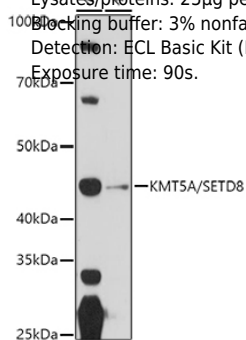
Buffer: PBS with 0.02% sodium azide,50% glycerol,pH7.3.

## Validation Data

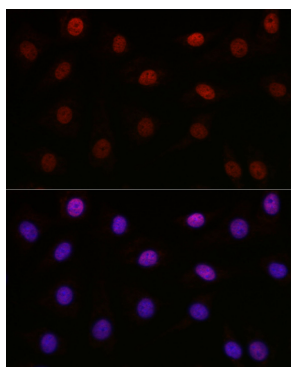


Western blot analysis of extracts of various cell lines, using (A5256) at 1:1000 dilution.  
 Secondary antibody: HRP Goat Anti-Rabbit IgG (H+L) (A5014) at 1:10000 dilution.  
 Lysates/proteins: 25µg per lane.  
 Blocking buffer: 3% nonfat dry milk in TBST.  
 Detection: ECL Basic Kit (RM00020).  
 Exposure time: 30s.

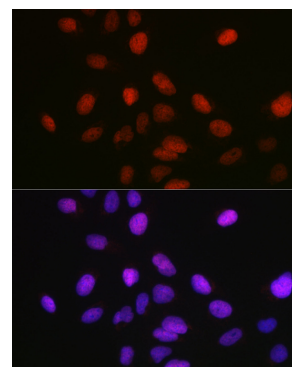
Western blot analysis of extracts of various cell lines, using (A5256) at 1:1000 dilution.  
 Secondary antibody: HRP Goat Anti-Rabbit IgG (H+L) (A5014) at 1:10000 dilution.  
 Lysates/proteins: 25µg per lane.  
 Blocking buffer: 3% nonfat dry milk in TBST.  
 Detection: ECL Basic Kit (RM00020).  
 Exposure time: 90s.



Immunofluorescence analysis of C6 cells using KMT5A/KMT5A/SETD8 Rabbit pAb (A5256) at dilution of 1:100 (40x lens). Blue: DAPI for nuclear staining.



Immunofluorescence analysis of NIH-3T3 cells using KMT5A/KMT5A/SETD8 Rabbit pAb (A5256) at dilution of 1:100 (40x lens). Blue: DAPI for nuclear staining.



Immunofluorescence analysis of U-2 OS cells using KMT5A/KMT5A/SETD8 Rabbit pAb (A5256) at dilution of 1:100 (40x lens). Blue: DAPI for nuclear staining.