

A5253

Leader in Biomolecular Solutions for Life Science



## SPTBN1 Rabbit pAb

Catalog No.: A5253

1 Publications

### Basic Information

#### Observed MW

275kDa

#### Calculated MW

275kDa

#### Category

Polyclonal Antibody

#### Applications

WB, ELISA

#### Cross-Reactivity

Human, Mouse

### Background

Spectrin is an actin crosslinking and molecular scaffold protein that links the plasma membrane to the actin cytoskeleton, and functions in the determination of cell shape, arrangement of transmembrane proteins, and organization of organelles. It is composed of two antiparallel dimers of alpha- and beta- subunits. This gene is one member of a family of beta-spectrin genes. The encoded protein contains an N-terminal actin-binding domain, and 17 spectrin repeats which are involved in dimer formation. Multiple transcript variants encoding different isoforms have been found for this gene.

### Recommended Dilutions

WB 1:1000 - 1:3000

### Immunogen Information

#### Gene ID

6711

#### Swiss Prot

Q01082

#### Immunogen

Recombinant fusion protein containing a sequence corresponding to amino acids 2100-2200 of human SPTBN1 (NP\_003119.2).

#### Synonyms

ELF; SPTB2; DDISBA; HEL102; betaSpII; SPTBN1

### Contact



[www.abclonal.com](http://www.abclonal.com)

### Product Information

#### Source

Rabbit

#### Isotype

IgG

#### Purification

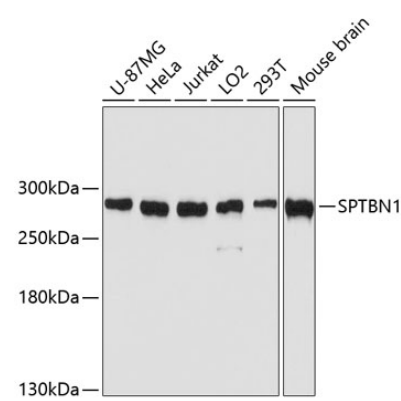
Affinity purification

#### Storage

Store at -20°C. Avoid freeze / thaw cycles.

Buffer: PBS with 0.01% thimerosal, 50% glycerol, pH7.3.

# Validation Data



Western blot analysis of various lysates using SPTBN1 Rabbit pAb (A5253) at 1:3000 dilution.  
Secondary antibody: HRP Goat Anti-Rabbit IgG (H+L) (A5014) at 1:10000 dilution.  
Lysates/proteins: 25µg per lane.  
Blocking buffer: 3% nonfat dry milk in TBST.  
Detection: ECL Basic Kit (RM00020).  
Exposure time: 10s.