

A5171

Leader in Biomolecular Solutions for Life Science



## WIF1 Rabbit mAb

Catalog No.: A5171 **Recombinant**

### Basic Information

**Observed MW**

42kDa

**Calculated MW**

42kDa

**Category**

SMab Recombinant Monoclonal Antibody

**Applications**

WB, ELISA

**Cross-Reactivity**

Human, Mouse, Rat

**CloneNo number**

ARC1161

### Background

The protein encoded by this gene functions to inhibit WNT proteins, which are extracellular signaling molecules that play a role in embryonic development. This protein contains a WNT inhibitory factor (WIF) domain and five epidermal growth factor (EGF)-like domains, and is thought to be involved in mesoderm segmentation. This gene functions as a tumor suppressor gene, and has been found to be epigenetically silenced in various cancers.

### Recommended Dilutions

**WB** 1:500 - 1:1000

### Immunogen Information

**Gene ID**

11197

**Swiss Prot**

Q9Y5W5

**Immunogen**

A synthetic peptide corresponding to a sequence within amino acids 280-379 of human WIF1 (Q9Y5W5).

**Synonyms**

WIF-1; WIF1

### Contact



[www.abclonal.com](http://www.abclonal.com)

### Product Information

**Source**

Rabbit

**Isotype**

IgG

**Purification**

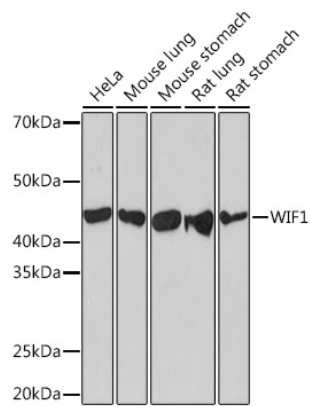
Affinity purification

**Storage**

Store at -20°C. Avoid freeze / thaw cycles.

Buffer: PBS with 0.02% sodium azide, 0.05% BSA, 50% glycerol, pH7.3.

Validation Data



Western blot analysis of extracts of various cell lines, using WIF1 Rabbit mAb (A5171) at 1:1000 dilution.  
Secondary antibody: HRP Goat Anti-Rabbit IgG (H+L) (AS014) at 1:10000 dilution.  
Lysates/proteins: 25µg per lane.  
Blocking buffer: 3% nonfat dry milk in TBST.  
Detection: ECL Basic Kit (RM00020).  
Exposure time: 3min.