

# ROR2 Rabbit mAb

Catalog No.: A5120 **Recombinant**

## Basic Information

### Observed MW

105kDa

### Calculated MW

105kDa

### Category

Primary antibody

### Applications

ELISA, WB

### Cross-Reactivity

Mouse

### CloneNo number

ARC1197

## Recommended Dilutions

**WB** 1:500 - 1:2000

## Background

The protein encoded by this gene is a receptor protein tyrosine kinase and type I transmembrane protein that belongs to the ROR subfamily of cell surface receptors. The protein may be involved in the early formation of the chondrocytes and may be required for cartilage and growth plate development. Mutations in this gene can cause brachydactyly type B, a skeletal disorder characterized by hypoplasia/aplasia of distal phalanges and nails. In addition, mutations in this gene can cause the autosomal recessive form of Robinow syndrome, which is characterized by skeletal dysplasia with generalized limb bone shortening, segmental defects of the spine, brachydactyly, and a dysmorphic facial appearance.

## Immunogen Information

### Gene ID

4920

### Swiss Prot

Q01974

### Immunogen

A synthetic peptide corresponding to a sequence within amino acids 1-100 of human ROR2 (Q01974).

### Synonyms

BDB; BDB1; NTRKR2; ROR2

## Contact

 | [www.abclonal.com](http://www.abclonal.com)

## Product Information

### Source

Rabbit

### Isotype

IgG

### Purification

Affinity purification

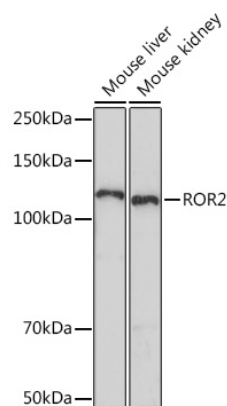
### Storage

Store at -20°C. Avoid freeze / thaw cycles.

Buffer: PBS with 0.02% sodium azide, 0.05% BSA, 50% glycerol, pH7.3.

## Validation Data

---



Western blot analysis of extracts of various cell lines, using ROR2 Rabbit mAb (A5120) at 1:1000 dilution.

Secondary antibody: HRP Goat Anti-Rabbit IgG (H+L) (A5014) at 1:10000 dilution.

Lysates/proteins: 25µg per lane.

Blocking buffer: 3% nonfat dry milk in TBST.

Detection: ECL Enhanced Kit (RM00021).

Exposure time: 90s.