

A5098

Leader in Biomolecular Solutions for Life Science



## MAD1/MAD1L1 Rabbit mAb

Catalog No.: A5098

Recombinant

### Basic Information

**Observed MW**

83kDa

**Calculated MW**

83kDa

**Category**

SMab Recombinant Monoclonal Antibody

**Applications**

WB, ELISA

**Cross-Reactivity**

Human, Mouse

**CloneNo number**

ARC1188

### Background

MAD1L1 is a component of the mitotic spindle-assembly checkpoint that prevents the onset of anaphase until all chromosome are properly aligned at the metaphase plate. MAD1L1 functions as a homodimer and interacts with MAD2L1. MAD1L1 may play a role in cell cycle control and tumor suppression. Alternative splicing results in multiple transcript variants.

### Recommended Dilutions

WB 1:500 - 1:2000

### Immunogen Information

**Gene ID**

8379

**Swiss Prot**

Q9Y6D9

**Immunogen**

A synthetic peptide corresponding to a sequence within amino acids 50-150 of human MAD1/MAD1L1 (Q9Y6D9).

**Synonyms**

MAD1; MVA7; PIG9; TP53I9; TXBP181; MAD1/MAD1L1

### Contact



[www.abclonal.com](http://www.abclonal.com)

### Product Information

**Source**

Rabbit

**Isotype**

IgG

**Purification**

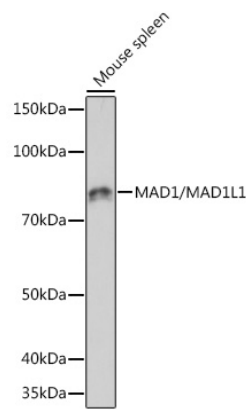
Affinity purification

**Storage**

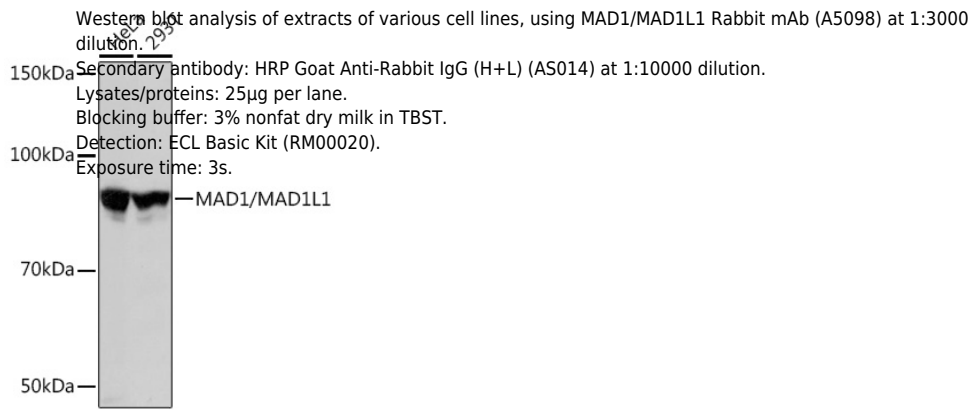
Store at -20°C. Avoid freeze / thaw cycles.

Buffer: PBS with 0.02% sodium azide, 0.05% BSA, 50% glycerol, pH7.3.

Validation Data



Western blot analysis of extracts of Mouse spleen, using MAD1/MAD1L1 Rabbit mAb (A5098) at 1:1000 dilution.  
Secondary antibody: HRP Goat Anti-Rabbit IgG (H+L) (AS014) at 1:10000 dilution.  
Lysates/proteins: 25µg per lane.  
Blocking buffer: 3% nonfat dry milk in TBST.  
Detection: ECL Basic Kit (RM00020).  
Exposure time: 60s.



Western blot analysis of extracts of various cell lines, using MAD1/MAD1L1 Rabbit mAb (A5098) at 1:3000 dilution.  
Secondary antibody: HRP Goat Anti-Rabbit IgG (H+L) (AS014) at 1:10000 dilution.  
Lysates/proteins: 25µg per lane.  
Blocking buffer: 3% nonfat dry milk in TBST.  
Detection: ECL Basic Kit (RM00020).  
Exposure time: 3s.