

A4981

Leader in Biomolecular Solutions for Life Science



GLP-1 Rabbit mAb

Catalog No.: A4981 **Recombinant**

Basic Information

Observed MW

Calculated MW
21kDa

Category
SMab Recombinant Monoclonal Antibody

Applications
IHC-P,IF/ICC,ELISA

Cross-Reactivity
Mouse,Rat

CloneNo number
ARC1142

Background

The protein encoded by this gene is actually a preproprotein that is cleaved into four distinct mature peptides. One of these, glucagon, is a pancreatic hormone that counteracts the glucose-lowering action of insulin by stimulating glycogenolysis and gluconeogenesis. Glucagon is a ligand for a specific G-protein linked receptor whose signalling pathway controls cell proliferation. Two of the other peptides are secreted from gut endocrine cells and promote nutrient absorption through distinct mechanisms. Finally, the fourth peptide is similar to glicentin, an active enteroglucagon.

Recommended Dilutions

IHC-P	1:50 - 1:200
IF/ICC	1:50 - 1:200

Immunogen Information

Gene ID	Swiss Prot
2641	P01275

Immunogen

A synthetic peptide corresponding to a sequence within amino acids 70-150 of human GLP-1 (P01275).

Synonyms

GLP1; GLP2; GRPP; GLP-1

Contact

 | www.abclonal.com

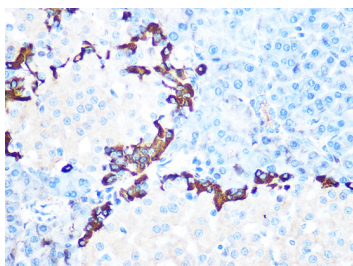
Product Information

Source	Isotype	Purification
Rabbit	IgG	Affinity purification

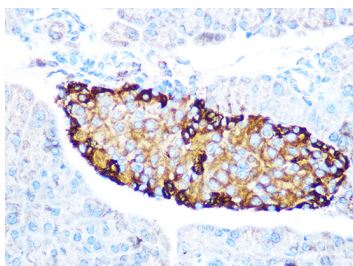
Storage

Store at -20°C. Avoid freeze / thaw cycles.
Buffer: PBS with 0.02% sodium azide,0.05% BSA,50% glycerol,pH7.3.

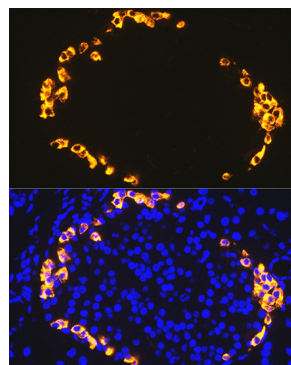
Validation Data



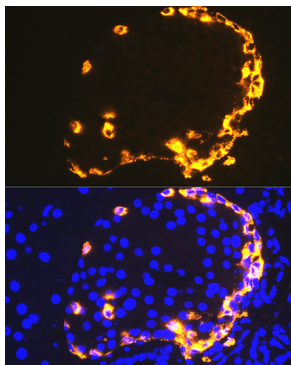
Immunohistochemistry analysis of GLP-1 in paraffin-embedded rat pancreas using GLP-1 Rabbit mAb (A4981) at dilution of 1:100 (40x lens). Perform microwave antigen retrieval with 10 mM PBS buffer pH 7.2 before commencing with IHC staining protocol.



Immunohistochemistry analysis of GLP-1 in paraffin-embedded mouse pancreas using GLP-1 Rabbit mAb (A4981) at dilution of 1:100 (40x lens). Perform microwave antigen retrieval with 10 mM PBS buffer pH 7.2 before commencing with IHC staining protocol.



Immunofluorescence analysis of rat pancreas using GLP-1 Rabbit mAb (A4981) at dilution of 1:100. Blue: DAPI for nuclear staining.



Immunofluorescence analysis of mouse pancreas using GLP-1 Rabbit mAb (A4981) at dilution of 1:100. Blue: DAPI for nuclear staining.