

A4940

Leader in Biomolecular Solutions for Life Science



MRPS26 Rabbit pAb

Catalog No.: A4940

Basic Information

Observed MW

24kDa

Calculated MW

24kDa

Category

Mouse Monoclonal Antibody

Applications

WB, IHC-P, ELISA

Cross-Reactivity

Human, Mouse, Rat

Background

Mammalian mitochondrial ribosomal proteins are encoded by nuclear genes and help in protein synthesis within the mitochondrion. Mitochondrial ribosomes (mitoribosomes) consist of a small 28S subunit and a large 39S subunit. They have an estimated 75% protein to rRNA composition compared to prokaryotic ribosomes, where this ratio is reversed. Another difference between mammalian mitoribosomes and prokaryotic ribosomes is that the latter contain a 5S rRNA. Among different species, the proteins comprising the mitoribosome differ greatly in sequence, and sometimes in biochemical properties, which prevents easy recognition by sequence homology. This gene encodes a 28S subunit protein. This gene lies adjacent to and downstream of the gonadotropin-releasing hormone precursor gene.

Recommended Dilutions

WB	1:500 - 1:2000
IHC-P	1:100 - 1:200

Immunogen Information

Gene ID

64949

Swiss Prot

Q9BYN8

Immunogen

Recombinant fusion protein containing a sequence corresponding to amino acids 1-205 of human MRPS26 (NP_110438.1).

Synonyms

GI008; MRPS13; RPMS13; MRP-S13; MRP-S26; NY-BR-87; C20orf193; dJ534B8.3; MRPS26

Contact



www.abclonal.com

Product Information

Source

Rabbit

Isotype

IgG

Purification

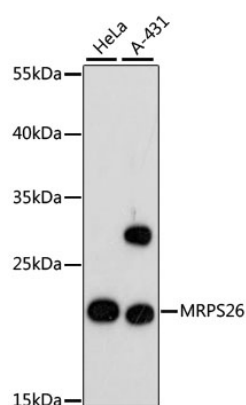
Affinity purification

Storage

Store at -20°C. Avoid freeze / thaw cycles.

Buffer: PBS with 0.01% thimerosal, 50% glycerol, pH 7.3.

Validation Data



Western blot analysis of various lysates using MRPS26 Rabbit pAb (A4940) at 1:3000 dilution.
Secondary antibody: HRP Goat Anti-Rabbit IgG (H+L) (AS014) at 1:10000 dilution.
Lysates/proteins: 25µg per lane.
Blocking buffer: 3% nonfat dry milk in TBST.
Detection: ECL Basic Kit (RM00020).
Exposure time: 90s.