

A4898

Leader in Biomolecular Solutions for Life Science



p70 S6 Kinase 1 Rabbit mAb

Catalog No.: A4898

Recombinant

2 Publications

Basic Information

Observed MW

68kDa/75kDa

Calculated MW

59kDa

Category

SMab Recombinant Monoclonal Antibody

Applications

WB, IHC-P, ELISA

Cross-Reactivity

Human, Mouse, Rat

CloneNo number

ARC57223

Background

This gene encodes a member of the ribosomal S6 kinase family of serine/threonine kinases. The encoded protein responds to mTOR (mammalian target of rapamycin) signaling to promote protein synthesis, cell growth, and cell proliferation. Activity of this gene has been associated with human cancer. Alternatively spliced transcript variants have been observed. The use of alternative translation start sites results in isoforms with longer or shorter N-termini which may differ in their subcellular localizations. There are two pseudogenes for this gene on chromosome 17.

Recommended Dilutions

WB	1:500 - 1:1000
IHC-P	1:50 - 1:200

Immunogen Information

Gene ID

6198

Swiss Prot

P23443

Immunogen

A synthetic peptide corresponding to a sequence within amino acids 1-100 of human p70 S6 Kinase 1 (NP_003152.1).

Synonyms

S6K; PS6K; S6K1; STK14A; p70-S6K; p70 S6KA; p70-alpha; S6K-beta-1; p70(S6K)-alpha; p70 S6 Kinase 1

Contact



www.abclonal.com

Product Information

Source

Rabbit

Isotype

IgG

Purification

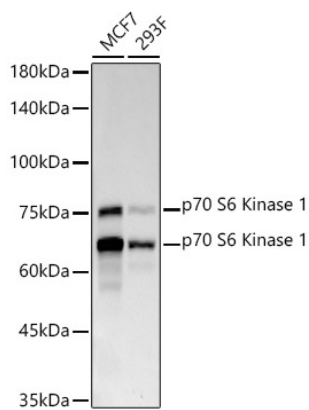
Affinity purification

Storage

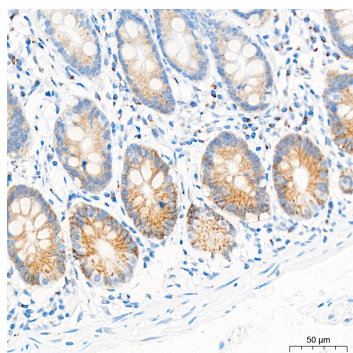
Store at -20°C. Avoid freeze / thaw cycles.

Buffer: PBS with 0.02% sodium azide, 0.05% BSA, 50% glycerol, pH7.3.

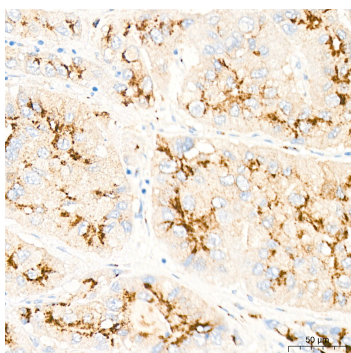
Validation Data



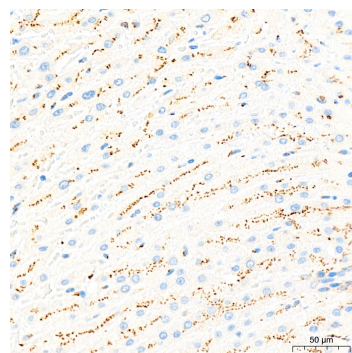
Western blot analysis of various lysates, using p70 S6 Kinase 1 Rabbit mAb (A4898) at 1:1000 dilution.
 Secondary antibody: HRP Goat Anti-Rabbit IgG (H+L) (A5014) at 1:10000 dilution.
 Lysates/proteins: 25µg per lane.
 Blocking buffer: 3% nonfat dry milk in TBST.
 Detection: ECL Basic Kit (RM00020).
 Exposure time: 30s.



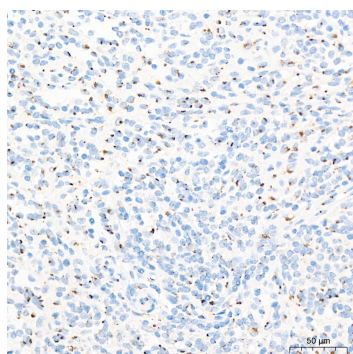
Immunohistochemistry analysis of p70 S6 Kinase 1 in paraffin-embedded human colon tissue using p70 S6 Kinase 1 Rabbit mAb (A4898) at a dilution of 1:200 (40x lens). High pressure antigen retrieval was performed with 0.01 M citrate buffer (pH 6.0) prior to IHC staining.



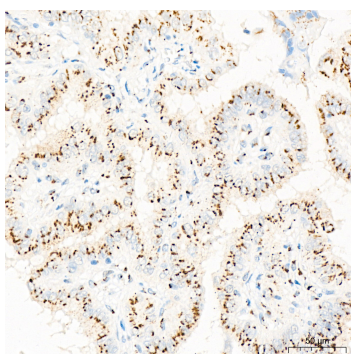
Immunohistochemistry analysis of p70 S6 Kinase 1 in paraffin-embedded human liver cancer tissue using p70 S6 Kinase 1 Rabbit mAb (A4898) at a dilution of 1:200 (40x lens). High pressure antigen retrieval was performed with 0.01 M citrate buffer (pH 6.0) prior to IHC staining.



Immunohistochemistry analysis of p70 S6 Kinase 1 in paraffin-embedded human liver tissue using p70 S6 Kinase 1 Rabbit mAb (A4898) at a dilution of 1:200 (40x lens). High pressure antigen retrieval was performed with 0.01 M citrate buffer (pH 6.0) prior to IHC staining.



Immunohistochemistry analysis of p70 S6 Kinase 1 in paraffin-embedded human spleen tissue using p70 S6 Kinase 1 Rabbit mAb (A4898) at a dilution of 1:200 (40x lens). High pressure antigen retrieval was performed with 0.01 M citrate buffer (pH 6.0) prior to IHC staining.



Immunohistochemistry analysis of p70 S6 Kinase 1 in paraffin-embedded human thyroid cancer tissue using p70 S6 Kinase 1 Rabbit mAb (A4898) at a dilution of 1:200 (40x lens). High pressure antigen retrieval was performed with 0.01 M citrate buffer (pH 6.0) prior to IHC staining.