

A4861

Leader in Biomolecular Solutions for Life Science



Cyclophilin B Rabbit mAb

Catalog No.: A4861 **Recombinant**

Basic Information

Observed MW

19kDa

Calculated MW

24kDa

Category

SMab Recombinant Monoclonal Antibody

Applications

WB, ELISA

Cross-Reactivity

Human, Mouse, Rat

CloneNo number

ARC0290

Background

The protein encoded by this gene is a cyclosporine-binding protein and is mainly located within the endoplasmic reticulum. It is associated with the secretory pathway and released in biological fluids. This protein can bind to cells derived from T- and B-lymphocytes, and may regulate cyclosporine A-mediated immunosuppression. Variants have been identified in this protein that give rise to recessive forms of osteogenesis imperfecta.

Recommended Dilutions

WB 1:500 - 1:2000

Immunogen Information

Gene ID

5479

Swiss Prot

P23284

Immunogen

A synthetic peptide corresponding to a sequence within amino acids 100-200 of human Cyclophilin B (P23284).

Synonyms

OI9; CYPB; SCYLP; CYP-S1; HEL-S-39; Cyclophilin B

Contact



www.abclonal.com

Product Information

Source

Rabbit

Isotype

IgG

Purification

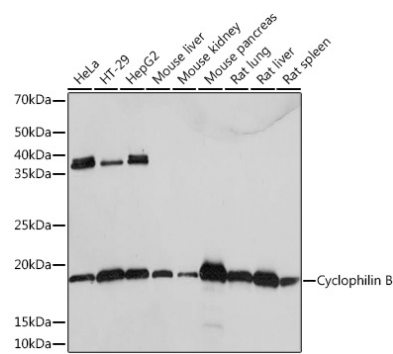
Affinity purification

Storage

Store at -20°C. Avoid freeze / thaw cycles.

Buffer: PBS with 0.02% sodium azide, 0.05% BSA, 50% glycerol, pH7.3.

Validation Data



Western blot analysis of extracts of various cell lines, using Cyclophilin B Rabbit mAb (A4861) at 1:1000 dilution.
Secondary antibody: HRP Goat Anti-Rabbit IgG (H+L) (AS014) at 1:10000 dilution.
Lysates/proteins: 25µg per lane.
Blocking buffer: 3% nonfat dry milk in TBST.
Detection: ECL Basic Kit (RM00020).
Exposure time: 1s.