

A4767

Leader in Biomolecular Solutions for Life Science



MUC2 Rabbit mAb

Catalog No.: A4767

Recombinant

7 Publications

Basic Information

Observed MW

110kDa

Calculated MW

551kDa

Category

SMab Recombinant Monoclonal Antibody

Applications

WB, IHC-P, ELISA

Cross-Reactivity

Human, Mouse, Rat

CloneNo number

ARC1012

Background

This gene encodes a member of the mucin protein family. Mucins are high molecular weight glycoproteins produced by many epithelial tissues. The protein encoded by this gene is secreted and forms an insoluble mucous barrier that protects the gut lumen. The protein polymerizes into a gel of which 80% is composed of oligosaccharide side chains by weight. The protein features a central domain containing tandem repeats rich in threonine and proline that varies between 50 and 115 copies in different individuals. Downregulation of this gene has been observed in patients with Crohn disease and ulcerative colitis.

Recommended Dilutions

WB	1:500 - 1:2000
IHC-P	1:100 - 1:500

Immunogen Information

Gene ID

4583

Swiss Prot

Q02817

Immunogen

A synthetic peptide corresponding to a sequence within amino acids 5000-5100 of human MUC2 (Q02817).

Synonyms

MLP; SMUC; MUC-2; MUC2

Contact



www.abclonal.com

Product Information

Source

Rabbit

Isotype

IgG

Purification

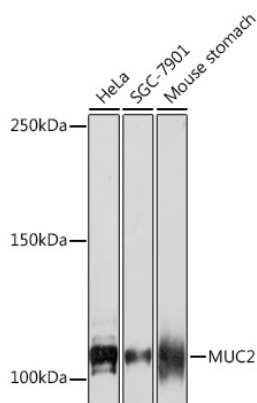
Affinity purification

Storage

Store at -20°C. Avoid freeze / thaw cycles.

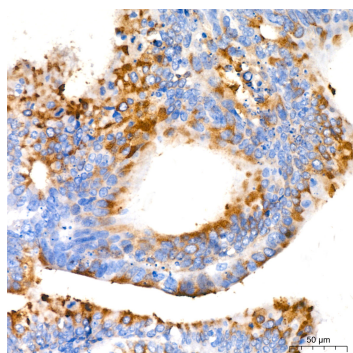
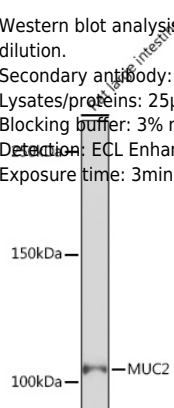
Buffer: PBS with 0.02% sodium azide, 0.05% BSA, 50% glycerol, pH7.3.

Validation Data

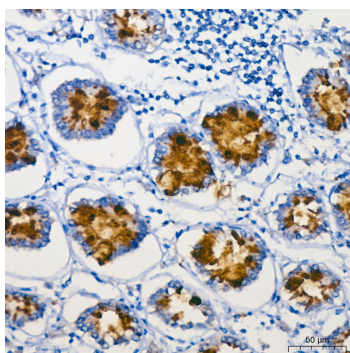


Western blot analysis of various lysates using MUC2 Rabbit mAb (A4767) at 1:1000 dilution.
 Secondary antibody: HRP Goat Anti-Rabbit IgG (H+L) (AS014) at 1:10000 dilution.
 Lysates/proteins: 25µg per lane.
 Blocking buffer: 3% nonfat dry milk in TBST.
 Detection: ECL Basic Kit (RM00020).
 Exposure time: 90s.

Western blot analysis of lysates from Rat large intestine, using MUC2 Rabbit mAb (A4767) at 1:1000 dilution.
 Secondary antibody: HRP Goat Anti-Rabbit IgG (H+L) (AS014) at 1:10000 dilution.
 Lysates/proteins: 25µg per lane.
 Blocking buffer: 3% nonfat dry milk in TBST.
 Detection: ECL Enhanced Kit (RM00021).
 Exposure time: 3min.



Immunohistochemistry analysis of MUC2 in paraffin-embedded human colon carcinoma using MUC2 Rabbit mAb (A4767) at dilution of 1:500 (40x lens). Perform high pressure antigen retrieval with 10 mM citrate buffer pH 6.0 before commencing with IHC staining protocol.



Immunohistochemistry analysis of MUC2 in paraffin-embedded human colon using MUC2 Rabbit mAb (A4767) at dilution of 1:500 (40x lens). Perform high pressure antigen retrieval with 10 mM citrate buffer pH 6.0 before commencing with IHC staining protocol.