

A4466

Leader in Biomolecular Solutions for Life Science



[KO Validated] PEPCK/PCK2 Rabbit mAb

Catalog No.: A4466

KO Validated

Recombinant

Basic Information

Observed MW

71kDa

Calculated MW

71kDa

Category

SMab Recombinant Monoclonal Antibody

Applications

WB,IF/ICC,ELISA

Cross-Reactivity

Human,Mouse,Rat

CloneNo number

ARC1017

Background

This gene encodes a mitochondrial enzyme that catalyzes the conversion of oxaloacetate to phosphoenolpyruvate in the presence of guanosine triphosphate (GTP). A cytosolic form of this protein is encoded by a different gene and is the key enzyme of gluconeogenesis in the liver. Alternatively spliced transcript variants have been described.

Recommended Dilutions

WB 1:500 - 1:1000

IF/ICC 1:50 - 1:200

Immunogen Information

Gene ID

5106

Swiss Prot

Q16822

Immunogen

Recombinant fusion protein containing a sequence corresponding to amino acids 550-640 of human PEPCK/PEPCK/PCK2 (Q16822).

Synonyms

PEPCK; PEPCK2; PEPCK-M; K2

Contact



www.abclonal.com

Product Information

Source

Rabbit

Isotype

IgG

Purification

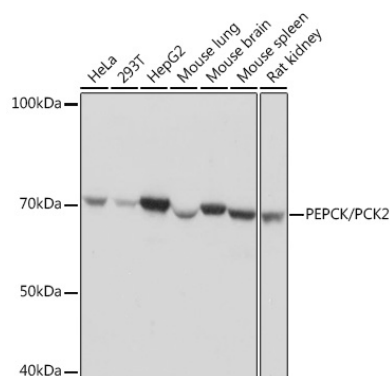
Affinity purification

Storage

Store at -20°C. Avoid freeze / thaw cycles.

Buffer: PBS with 0.02% sodium azide,0.05% BSA,50% glycerol,pH7.3.

Validation Data



Western blot analysis of lysates from wild type(WT) and PEPCK/PCK2 knockout (KO) 293T cells, using [KO Validated] PEPCK/PCK2 Rabbit mAb (A4466) at 1:1000 dilution. Secondary antibody: HRP Goat Anti-Rabbit IgG (H+L) (AS014) at 1:10000 dilution. Lysates/proteins: 25µg per lane. Blocking buffer: 3% nonfat dry milk in TBST. Detection: ECL Basic Kit (RM00020). Exposure time: 30s.

