

A4365

Leader in Biomolecular Solutions for Life Science



## ABCF2 Rabbit pAb

Catalog No.: A4365

### Basic Information

#### Observed MW

72kDa

#### Calculated MW

71kDa

#### Category

Polyclonal Antibody

#### Applications

WB, IF/ICC, ELISA

#### Cross-Reactivity

Human, Mouse

### Background

This gene encodes a member of the ATP-binding cassette (ABC) transporter superfamily. ATP-binding cassette proteins transport various molecules across extra- and intracellular membranes. Alterations in this gene may be involved in cancer progression. Related pseudogenes have been identified on chromosomes 3 and 7.

### Recommended Dilutions

WB	1:500 - 1:2000
IF/ICC	1:50 - 1:200

### Immunogen Information

#### Gene ID

10061

#### Swiss Prot

Q9UG63

#### Immunogen

Recombinant fusion protein containing a sequence corresponding to amino acids 1-250 of human ABCF2 (NP\_005683.2).

#### Synonyms

ABC28; HUSSY18; HUSSY-18; EST133090; ABCF2

### Contact



[www.abclonal.com](http://www.abclonal.com)

### Product Information

#### Source

Rabbit

#### Isotype

IgG

#### Purification

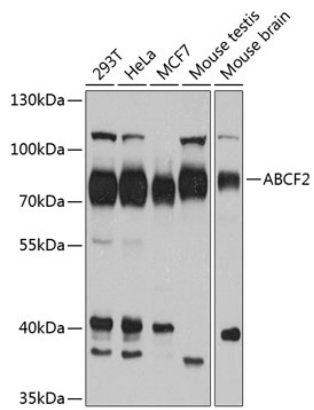
Affinity purification

#### Storage

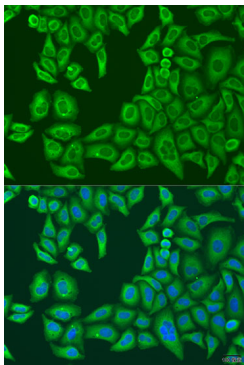
Store at -20°C. Avoid freeze / thaw cycles.

Buffer: PBS with 0.02% sodium azide, 50% glycerol, pH 7.3.

## Validation Data



Western blot analysis of extracts of various cell lines, using ABCF2 antibody (A4365) at 1:1000 dilution.  
Secondary antibody: HRP Goat Anti-Rabbit IgG (H+L) (A5014) at 1:10000 dilution.  
Lysates/proteins: 25µg per lane.  
Blocking buffer: 3% nonfat dry milk in TBST.  
Detection: ECL Basic Kit (RM00020).  
Exposure time: 60s.



Immunofluorescence analysis of U2OS cells using ABCF2 antibody (A4365) at dilution of 1:100. Blue: DAPI for nuclear staining.