

A4353

Leader in Biomolecular Solutions for Life Science



## DYNLL1 Rabbit mAb

Catalog No.: A4353 **Recombinant**

### Basic Information

**Observed MW**

10kDa

**Calculated MW**

10kDa

**Category**

SMab Recombinant Monoclonal Antibody

**Applications**

WB,IHC-P,ELISA

**Cross-Reactivity**

Human,Mouse,Rat

**CloneNo number**

ARC0975

### Background

Cytoplasmic dyneins are large enzyme complexes with a molecular mass of about 1,200 kD. They contain two force-producing heads formed primarily from dynein heavy chains, and stalks linking the heads to a basal domain, which contains a varying number of accessory intermediate chains. The complex is involved in intracellular transport and motility. The protein described in this record is a light chain and exists as part of this complex but also physically interacts with and inhibits the activity of neuronal nitric oxide synthase. Binding of this protein destabilizes the neuronal nitric oxide synthase dimer, a conformation necessary for activity, and it may regulate numerous biologic processes through its effects on nitric oxide synthase activity. Alternate transcriptional splice variants have been characterized.

### Recommended Dilutions

WB	1:500 - 1:2000
IHC-P	1:50 - 1:200

### Immunogen Information

**Gene ID**

8655

**Swiss Prot**

P63167

**Immunogen**

A synthetic peptide corresponding to a sequence within amino acids 1-89 of human DYNLL1 (P63167).

**Synonyms**

LC8; PIN; DLC1; DLC8; LC8a; DNCL1; hdlc1; DNCLC1; DYNLL1

### Contact



[www.abclonal.com](http://www.abclonal.com)

### Product Information

**Source**

Rabbit

**Isotype**

IgG

**Purification**

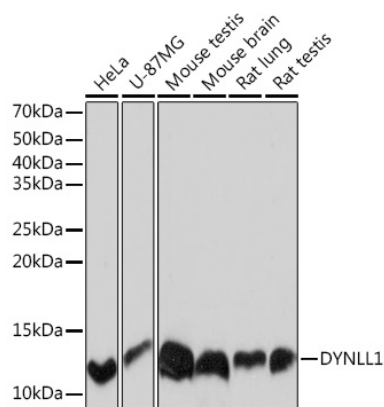
Affinity purification

**Storage**

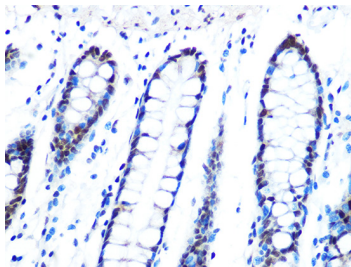
Store at -20°C. Avoid freeze / thaw cycles.

Buffer: PBS with 0.02% sodium azide,0.05% BSA,50% glycerol,pH7.3.

## Validation Data



Western blot analysis of extracts of various cell lines, using DYNLL1 Rabbit mAb (A4353) at 1:1000 dilution.  
Secondary antibody: HRP Goat Anti-Rabbit IgG (H+L) (AS014) at 1:10000 dilution.  
Lysates/proteins: 25µg per lane.  
Blocking buffer: 3% nonfat dry milk in TBST.  
Detection: ECL Basic Kit (RM00020).  
Exposure time: 10s.



Immunohistochemistry analysis of paraffin-embedded human colon using DYNLL1 Rabbit mAb (A4353) at dilution of 1:100 (40x lens). Perform microwave antigen retrieval with 10 mM PBS buffer pH 7.2 before commencing with IHC staining protocol.