

A4349

Leader in Biomolecular Solutions for Life Science



# TOM70 Rabbit pAb

Catalog No.: A4349

5 Publications

## Basic Information

### Observed MW

75kDa

### Calculated MW

67kDa

### Category

Mouse Monoclonal Antibody

### Applications

WB, IF/ICC, ELISA

### Cross-Reactivity

Human, Mouse, Rat

## Background

This gene encodes an import receptor of the outer mitochondrial membrane that is part of the translocase of the outer membrane complex. This protein is involved in the import of mitochondrial precursor proteins. The protein interacts with the SARS-CoV and SARS-Cov-2 ORF9b proteins.

## Recommended Dilutions

WB	1:100 - 1:500
IF/ICC	1:50 - 1:200

## Immunogen Information

### Gene ID

9868

### Swiss Prot

O94826

### Immunogen

Recombinant fusion protein containing a sequence corresponding to amino acids 245-608 of human TOM70 (NP\_055635.3).

### Synonyms

Tom70; TOMM70A; TOM70

## Contact



[www.abclonal.com](http://www.abclonal.com)

## Product Information

### Source

Rabbit

### Isotype

IgG

### Purification

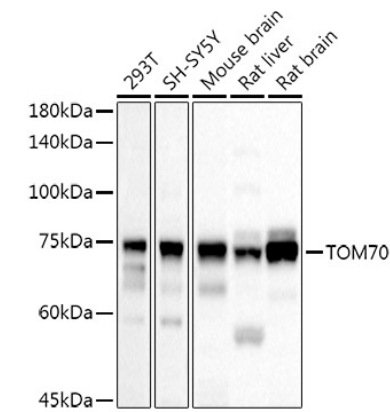
Affinity purification

### Storage

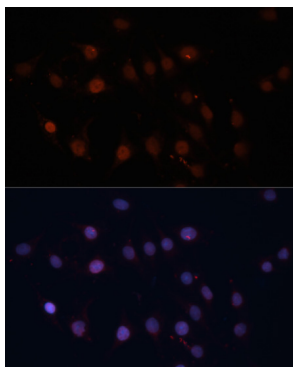
Store at -20°C. Avoid freeze / thaw cycles.

Buffer: PBS with 0.05% proclin300, 50% glycerol, pH7.3.

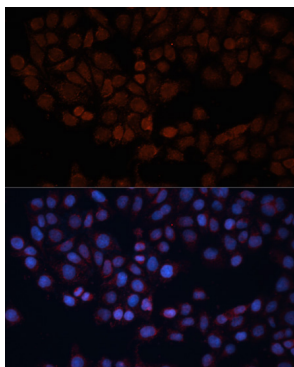
Validation Data



Western blot analysis of extracts of various cell lines, using TOM70 Rabbit pAb antibody (A4349) at 1:500 dilution.  
Secondary antibody: HRP Goat Anti-Rabbit IgG (H+L) (AS014) at 1:10000 dilution.  
Lysates/proteins: 25µg per lane.  
Blocking buffer: 3% nonfat dry milk in TBST.  
Detection: ECL Basic Kit (RM00020).  
Exposure time: 10s.



Immunofluorescence analysis of C6 cells using TOM70 antibody (A4349) at dilution of 1:100. Blue: DAPI for nuclear staining.



Immunofluorescence analysis of HeLa cells using TOM70 antibody (A4349) at dilution of 1:100. Blue: DAPI for nuclear staining.