

A4340

Leader in Biomolecular Solutions for Life Science



FAM38A/PIEZO1 Rabbit pAb

Catalog No.: A4340

1 Publications

Basic Information

Observed MW

286kDa

Calculated MW

287kDa

Category

Polyclonal Antibody

Applications

WB, IF/ICC, ELISA

Cross-Reactivity

Human, Mouse, Rat

Background

The protein encoded by this gene is a mechanically-activated ion channel that links mechanical forces to biological signals. The encoded protein contains 36 transmembrane domains and functions as a homotetramer. Defects in this gene have been associated with dehydrated hereditary stomatocytosis.

Recommended Dilutions

WB	1:500 - 1:1000
IF/ICC	1:50 - 1:200

Immunogen Information

Gene ID

9780

Swiss Prot

Q92508

Immunogen

Recombinant fusion protein containing a sequence corresponding to amino acids 2230-2420 of human FAM38A/PIEZO1 (NP_001136336.2).

Synonyms

ER; DHS; Mib; LMPH3; FAM38A; LMPHM6; FAM38A/PIEZO1

Contact



www.abclonal.com

Product Information

Source

Rabbit

Isotype

IgG

Purification

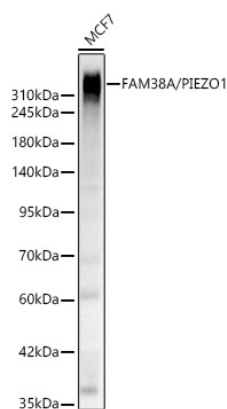
Affinity purification

Storage

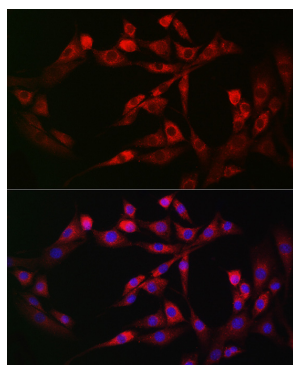
Store at -20°C. Avoid freeze / thaw cycles.

Buffer: PBS with 0.05% proclin300, 50% glycerol, pH7.3.

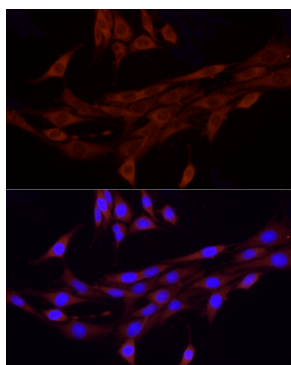
Validation Data



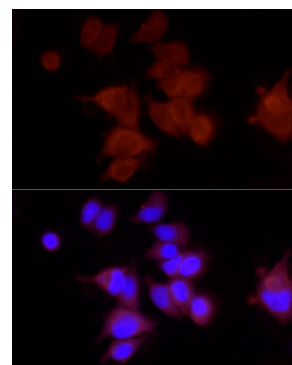
Western blot analysis of lysates from MCF7 cells, using FAM38A/PIEZO1 Rabbit pAb (A4340) at 1:1000 dilution.
Secondary antibody: HRP Goat Anti-Rabbit IgG (H+L) (AS014) at 1:10000 dilution.
Lysates/proteins: 25ug per lane.
Blocking buffer: 3% nonfat dry milk in TBST.
Detection: ECL Basic Kit (RM00020).
Exposure time: 45s.



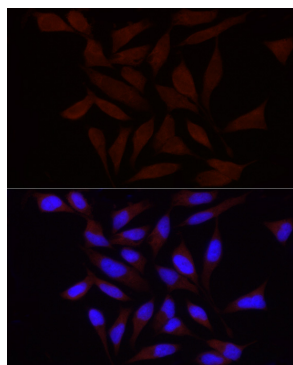
Immunofluorescence analysis of NIH-3T3 cells using FAM38A/PIEZO1 Rabbit pAb (A4340) at dilution of 1:200 (40x lens). Secondary antibody: Cy3 Goat Anti-Rabbit IgG (H+L) (AS007) at 1:500 dilution. Blue: DAPI for nuclear staining.



Immunofluorescence analysis of PC-12 using FAM38A/PIEZO1 Rabbit pAb (A4340) at dilution of 1:100 (40x lens). Blue: DAPI for nuclear staining.



Immunofluorescence analysis of MCF-7 using FAM38A/PIEZO1 Rabbit pAb (A4340) at dilution of 1:100 (40x lens). Blue: DAPI for nuclear staining.



Immunofluorescence analysis of HeLa using FAM38A/PIEZO1 Rabbit pAb (A4340) at dilution of 1:100 (40x lens). Blue: DAPI for nuclear staining.