

A4335

Leader in Biomolecular Solutions for Life Science



## GABARAP Rabbit mAb

Catalog No.: A4335 **Recombinant**

### Basic Information

**Observed MW**

16kDa

**Calculated MW**

14kDa

**Category**

SMab Recombinant Monoclonal Antibody

**Applications**

WB, ELISA

**Cross-Reactivity**

Human, Mouse, Rat

**CloneNo number**

ARC1057

### Background

Gamma-aminobutyric acid A receptors [GABA(A) receptors] are ligand-gated chloride channels that mediate inhibitory neurotransmission. This gene encodes GABA(A) receptor-associated protein, which is highly positively charged in its N-terminus and shares sequence similarity with light chain-3 of microtubule-associated proteins 1A and 1B. This protein clusters neurotransmitter receptors by mediating interaction with the cytoskeleton.

### Recommended Dilutions

**WB** 1:500 - 1:2000

### Immunogen Information

**Gene ID**

11337

**Swiss Prot**

O95166

**Immunogen**

A synthetic peptide corresponding to a sequence within amino acids 1-100 of human GABARAP (O95166).

**Synonyms**

MM46; ATG8A; GABARAP-a; GABARAP

### Contact



[www.abclonal.com](http://www.abclonal.com)

### Product Information

**Source**

Rabbit

**Isotype**

IgG

**Purification**

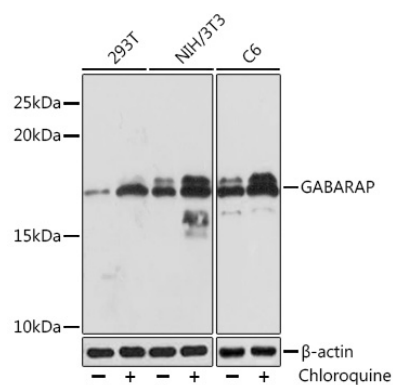
Affinity purification

**Storage**

Store at -20°C. Avoid freeze / thaw cycles.

Buffer: PBS with 0.02% sodium azide, 0.05% BSA, 50% glycerol, pH7.3.

## Validation Data



Western blot analysis of extracts of various cell lines, using GABARAP Rabbit mAb (A4335) at 1:1000 dilution. 293T cells were treated by Chloroquine (50  $\mu$ M) at 37°C for 20 hours. Secondary antibody: HRP Goat Anti-Rabbit IgG (H+L) (AS014) at 1:10000 dilution. Lysates/proteins: 25  $\mu$ g per lane. Blocking buffer: 3% BSA. Detection: ECL Basic Kit (RM00020). Exposure time: 10s.