

HOMER1 Rabbit pAb

Catalog No.: A4302

Basic Information

Observed MW

42kDa

Calculated MW

40kDa

Category

Primary antibody

Applications

ELISA, WB, IF/ICC

Cross-Reactivity

Human, Mouse, Rat

Background

This gene encodes a member of the homer family of dendritic proteins. Members of this family regulate group 1 metabotropic glutamate receptor function.

Recommended Dilutions

WB	1:500 - 1:1000
IF/ICC	1:50 - 1:200

Immunogen Information

Gene ID	Swiss Prot
9456	Q86YM7

Immunogen

Recombinant fusion protein containing a sequence corresponding to amino acids 125-354 of human HOMER1 (NP_004263.1).

Synonyms

HOMER; SYN47; Ves-1; HOMER1A; HOMER1B; HOMER1C; HOMER1

Contact

 | www.abclonal.com

Product Information

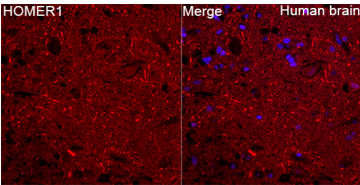
Source	Isotype	Purification
Rabbit	IgG	Affinity purification

Storage

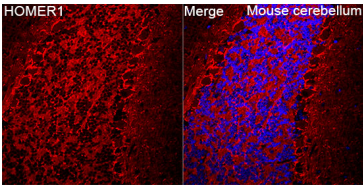
Store at -20°C. Avoid freeze / thaw cycles.

Buffer: PBS with 0.01% thimerosal, 50% glycerol, pH7.3.

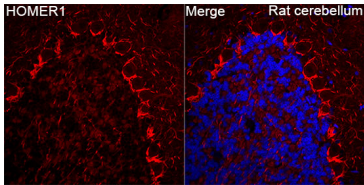
Validation Data



Immunofluorescence analysis of paraffin-embedded Human brain tissue using HOMER1 Rabbit pAb (A4302) at a dilution of 1:200 (40x lens). Secondary antibody: Cy3 Goat Anti-Rabbit IgG (H+L) (AS007) at 1:500 dilution. Blue: DAPI for nuclear staining. Perform microwave antigen retrieval with 0.01 M citrate buffer (pH 6.0) prior to IF staining.



Immunofluorescence analysis of paraffin-embedded Mouse cerebellum tissue using HOMER1 Rabbit pAb (A4302) at a dilution of 1:200 (40x lens). Secondary antibody: Cy3 Goat Anti-Rabbit IgG (H+L) (AS007) at 1:500 dilution. Blue: DAPI for nuclear staining. Perform microwave antigen retrieval with 0.01 M citrate buffer (pH 6.0) prior to IF staining.



Immunofluorescence analysis of paraffin-embedded Rat cerebellum tissue using HOMER1 Rabbit pAb (A4302) at a dilution of 1:200 (40x lens). Secondary antibody: Cy3 Goat Anti-Rabbit IgG (H+L) (AS007) at 1:500 dilution. Blue: DAPI for nuclear staining. Perform microwave antigen retrieval with 0.01 M citrate buffer (pH 6.0) prior to IF staining.