

A4274

Leader in Biomolecular Solutions for Life Science



## [KO Validated] ARHGEF1 Rabbit pAb

Catalog No.: A4274 **KO** Validated

### Basic Information

#### Observed MW

115kDa

#### Calculated MW

102kDa

#### Category

Polyclonal Antibody

#### Applications

WB,IHC-P,ELISA

#### Cross-Reactivity

Human,Rat

### Background

Rho GTPases play a fundamental role in numerous cellular processes that are initiated by extracellular stimuli that work through G protein coupled receptors. The encoded protein may form complex with G proteins and stimulate Rho-dependent signals. Multiple alternatively spliced transcript variants have been found for this gene, but the full-length nature of some variants has not been defined.

### Recommended Dilutions

WB 1:500 - 1:2000

IHC-P 1:50 - 1:100

### Immunogen Information

#### Gene ID

9138

#### Swiss Prot

Q92888

#### Immunogen

Recombinant fusion protein containing a sequence corresponding to amino acids 783-912 of human ARHGEF1 (NP\_004697.2).

#### Synonyms

LSC; GEF1; IMD62; LBCL2; SUB1.5; P115-RHOGEF; F1

### Contact



[www.abclonal.com](http://www.abclonal.com)

### Product Information

#### Source

Rabbit

#### Isotype

IgG

#### Purification

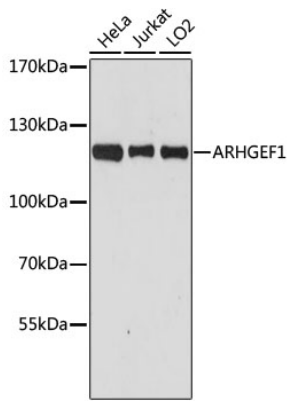
Affinity purification

#### Storage

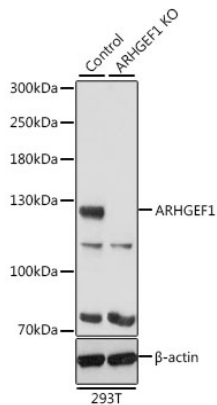
Store at -20°C. Avoid freeze / thaw cycles.

Buffer: PBS with 0.01% thimerosal, 50% glycerol, pH7.3.

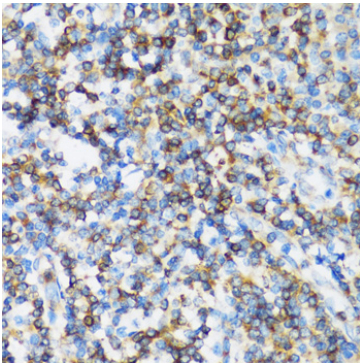
## Validation Data



Western blot analysis of various lysates using [KO Validated] ARHGEF1 Rabbit pAb (A4274) at 1:3000 dilution.  
Secondary antibody: HRP Goat Anti-Rabbit IgG (H+L) (AS014) at 1:10000 dilution.  
Lysates/proteins: 25µg per lane.  
Blocking buffer: 3% nonfat dry milk in TBST.  
Detection: ECL Basic Kit (RM00020).  
Exposure time: 90s.



Western blot analysis of lysates from wild type (WT) and ARHGEF1 knockout (KO) 293T cells, using [KO Validated] ARHGEF1 Rabbit pAb (A4274) at 1:500 dilution.  
Secondary antibody: HRP Goat Anti-Rabbit IgG (H+L) (AS014) at 1:10000 dilution.  
Lysates/proteins: 25µg per lane.  
Blocking buffer: 3% nonfat dry milk in TBST.  
Detection: ECL Basic Kit (RM00020).  
Exposure time: 10s.



Immunohistochemistry analysis of paraffin-embedded human tonsil using [KO Validated] ARHGEF1 Rabbit pAb (A4274) at dilution of 1:100 (40x lens). Perform microwave antigen retrieval with 10 mM PBS buffer pH 7.2 before commencing with IHC staining protocol.