

A4228

Leader in Biomolecular Solutions for Life Science



CD225/IFITM1 Rabbit pAb

Catalog No.: A4228

1 Publications

Basic Information

Observed MW

17kDa

Calculated MW

14kDa

Category

Polyclonal Antibody

Applications

WB, IHC-P, ELISA

Cross-Reactivity

Human, Mouse

Background

Interferon-induced transmembrane (IFITM) proteins are a family of interferon induced antiviral proteins. The family contains five members, including IFITM1, IFITM2 and IFITM3 that belong to the CD225 superfamily. The protein encoded by this gene restricts cellular entry by diverse viral pathogens, such as influenza A virus, Ebola virus and Sars-CoV-2.

Recommended Dilutions

WB 1:200 - 1:2000

Immunogen Information

Gene ID

8519

Swiss Prot

P13164

Immunogen

A synthetic peptide corresponding to a sequence within amino acids 50-125 of human CD225/IFITM1 (NP_003632.3).

Synonyms

9-27; CD225; IFI17; LEU13; DSPA2a; CD225/IFITM1

Contact



www.abclonal.com

Product Information

Source

Rabbit

Isotype

IgG

Purification

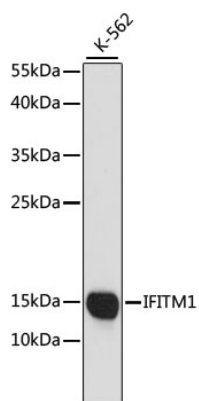
Affinity purification

Storage

Store at -20°C. Avoid freeze / thaw cycles.

Buffer: PBS with 0.01% thimerosal, 50% glycerol, pH7.3.

Validation Data



Western blot analysis of lysates from K-562 cells, using CD225/IFITM1 Rabbit pAb (A4228) at 1:1000 dilution.

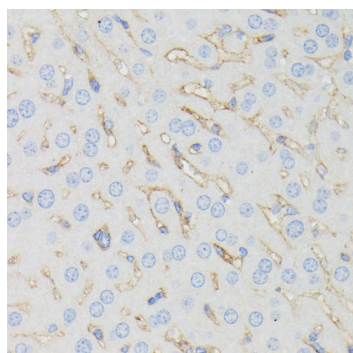
Secondary antibody: HRP Goat Anti-Rabbit IgG (H+L) (AS014) at 1:10000 dilution.

Lysates/proteins: 25µg per lane.

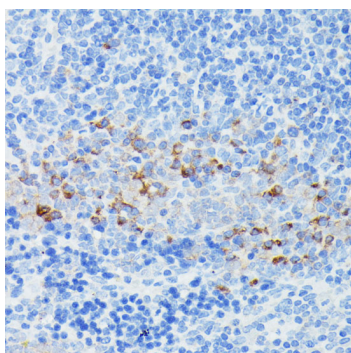
Blocking buffer: 3% nonfat dry milk in TBST.

Detection: ECL Basic Kit (RM00020).

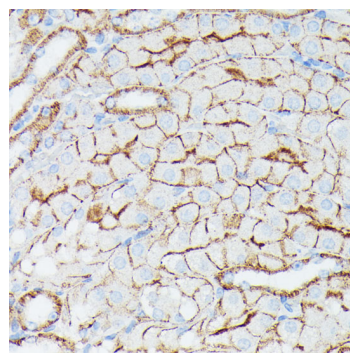
Exposure time: 90s.



Immunohistochemistry analysis of CD225/IFITM1 in paraffin-embedded mouse liver using CD225/IFITM1 Rabbit pAb (A4228) at dilution of 1:100 (40x lens). Perform microwave antigen retrieval with 10 mM PBS buffer pH 7.2 before commencing with IHC staining protocol.



Immunohistochemistry analysis of CD225/IFITM1 in paraffin-embedded mouse spleen using CD225/IFITM1 Rabbit pAb (A4228) at dilution of 1:100 (40x lens). Perform microwave antigen retrieval with 10 mM PBS buffer pH 7.2 before commencing with IHC staining protocol.



Immunohistochemistry analysis of CD225/IFITM1 in paraffin-embedded mouse kidney using CD225/IFITM1 Rabbit pAb (A4228) at dilution of 1:100 (40x lens). Perform microwave antigen retrieval with 10 mM PBS buffer pH 7.2 before commencing with IHC staining protocol.