

# WNK1 Rabbit mAb

Catalog No.: A4223 **Recombinant**

## Basic Information

### Observed MW

251kDa

### Calculated MW

251kDa

### Category

Primary antibody

### Applications

ELISA, WB

### Cross-Reactivity

Mouse

### CloneNo number

ARC0932

## Recommended Dilutions

**WB** 1:500 - 1:1000

## Background

This gene encodes a member of the WNK subfamily of serine/threonine protein kinases. The encoded protein may be a key regulator of blood pressure by controlling the transport of sodium and chloride ions. Mutations in this gene have been associated with pseudohypoaldosteronism type II and hereditary sensory neuropathy type II. Alternatively spliced transcript variants encoding different isoforms have been described but the full-length nature of all of them has yet to be determined.

## Immunogen Information

### Gene ID

65125

### Swiss Prot

Q9H4A3

### Immunogen

A synthetic peptide corresponding to a sequence within amino acids 1-100 of human WNK1 (Q9H4A3).

### Synonyms

KDP; PSK; p65; HSN2; HSN2; PRKWINK1; PPP1R167; WNK1

## Contact

 | [www.abclonal.com](http://www.abclonal.com)

## Product Information

### Source

Rabbit

### Isotype

IgG

### Purification

Affinity purification

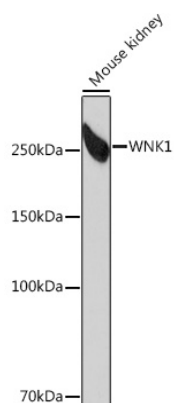
### Storage

Store at -20°C. Avoid freeze / thaw cycles.

Buffer: PBS with 0.02% sodium azide, 0.05% BSA, 50% glycerol, pH7.3.

## Validation Data

---



Western blot analysis of extracts of Mouse kidney, using WNK1 Rabbit mAb (A4223) at 1:1000 dilution.

Secondary antibody: HRP Goat Anti-Rabbit IgG (H+L) (A5014) at 1:10000 dilution.

Lysates/proteins: 25µg per lane.

Blocking buffer: 3% nonfat dry milk in TBST.

Detection: ECL Basic Kit (RM00020).

Exposure time: 3min.