

A4205

Leader in Biomolecular Solutions for Life Science



GAN Rabbit pAb

Catalog No.: A4205

Basic Information

Observed MW

71kDa

Calculated MW

68kDa

Category

Polyclonal Antibody

Applications

WB, ELISA

Cross-Reactivity

Human, Mouse

Background

This gene encodes a member of the cytoskeletal BTB/kelch (Broad-Complex, Tramtrack and Bric a brac) repeat family. The encoded protein plays a role in neurofilament architecture and is involved in mediating the ubiquitination and degradation of some proteins. Defects in this gene are a cause of giant axonal neuropathy (GAN).

Recommended Dilutions

WB 1:500 - 1:2000

Immunogen Information

Gene ID

8139

Swiss Prot

Q9H2C0

Immunogen

Recombinant fusion protein containing a sequence corresponding to amino acids 1-240 of human GAN (NP_071324.1).

Synonyms

GIG; GAN1; KLHL16; GAN

Contact



www.abclonal.com

Product Information

Source

Rabbit

Isotype

IgG

Purification

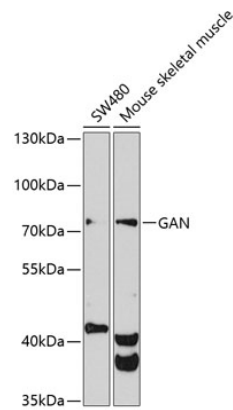
Affinity purification

Storage

Store at -20°C. Avoid freeze / thaw cycles.

Buffer: PBS with 0.02% sodium azide, 50% glycerol, pH 7.3.

Validation Data



Western blot analysis of extracts of various cell lines, using GAN antibody (A4205) at 1:1000 dilution.
Secondary antibody: HRP Goat Anti-Rabbit IgG (H+L) (AS014) at 1:10000 dilution.
Lysates/proteins: 25µg per lane.
Blocking buffer: 3% nonfat dry milk in TBST.
Detection: ECL Basic Kit (RM00020).
Exposure time: 90s.